



**GASTROPARTS**

Food Preparation ›

# **[EN]** Spiral mixers

**[DE]** Spiral-Teigknetmaschinen

**[ES]** Mezclador espiral

**[FR]** Mélangeur à Spirale

**[IT]** Impastatrice a spirale

**[PL]** Miksery spiralne

**[RU]** Тестомесы спиральные

✉ [gastroparts@gastroparts.com](mailto:gastroparts@gastroparts.com)

☎ tel. +48 56 657 00 66

📘 [fb.com/gastroparts.global](https://fb.com/gastroparts.global)

**GASTROPARTS.COM**



## **dough dividers** funnels



Pos.	Part no.	portions of (g)	ø (mm)	L (mm)	BA (mm)	suitable for	equiv. no.
1	690884	120-160	135	160	180	OEM	AH23
2	690885	150-190	135	160	180	OEM	AH24
3	690886	180-220	135	160	180	OEM	AH25
4	690887	210-260	135	160	180	OEM	AH26

Pos.	Part no.	portions of (g)	ø (mm)	L (mm)	BA (mm)	suitable for	equiv. no.
5	690888	240-280	135	160	180	OEM	AH44
6	690882	60-100	135	160	180	OEM	AH21
7	690883	90-130	135	160	180	OEM	AH22

## **dough mixers** bearing blocks



Pos.	Part no.	application	version	MP	ø (mm)	int. ø (mm)	H (mm)	for device	suitable for	equiv. no.
1	697208	for dough hook	-	upper	121	47	87	25-38 S-C-F	Fimar	SL0080
2	697324	for dough hook	-	upper	140	52	90	33-42-53 TF-TR	Pizza-Group	8301490
3	697386	for dough hook	complete	upper	121	-	85	25-38 S-C-F	Fimar	SA4100



Pos.	Part no.	application	ø (mm)	int. ø (mm)	int. ø 1 (mm)	H (mm)	for device	suitable for	equiv. no.
1	697216							Fimar	SL3209
2	697194							Fimar	SL2838
3	697197	-	100	42	-	55	12-18 C-F	Fimar	SL2626
4	697211	-	120	47	-	48	25-38 C-F	Fimar	SL2627
5	697196	for dough hook	103	40	-	55	7-12-18 S-C-F	Fimar	SL0022
6	697323	for dough hook	107	52	-	57	17-22 TF-TR	Pizza-Group	8301480
7	697251	for mixer bowl	103	40	-	58	7-12-18 S-C-F	Fimar	SL0016
8	697252	for mixer bowl	145	42	47	79	25-38 S-C-F	Fimar	SL0074
9	697325	for mixer bowl	148	52	-	83	-	Pizza-Group	8300200
10	697253	for mixer bowl	180	52	-	88	50 S-C-F	Fimar	SL2723



Pos.	Part no.	MP	int. ø (mm)	int. ø 1 (mm)	int. ø 2 (mm)	for device	suitable for	equiv. no.
1	697019	bottom					Alimacchine	57NT50
2	697021	bottom					Alimacchine	57NT70
3	697013	bottom				NT05 10	Alimacchine	57NT05
4	697015	bottom	42	52	62	NT20 30	Alimacchine	57NT20
5	697017	bottom	47	52	62	NT40	Alimacchine	57NT40



Pos.	Part no.	MP	int. ø 1 (mm)	int. ø 2 (mm)	LA (mm)	for device	suitable for	equiv. no.
1	697012	upper	42	42		NT05 10	Alimacchine	6NT05
2	692032	upper	42	47			OEM	KE02600
3	697014	upper	42	47		NT20 30	Alimacchine	6NT20
4	697016	upper	52	62	173	NT40	Alimacchine	6NT40
5	697020	upper	52	62	183	NT70	Alimacchine	6NT70
6	697018	upper	52	62	212	NT50	Alimacchine	6NT50



Pos.	Part no.	application	ø (mm)	int. ø (mm)	H (mm)	version	for device	suitable for	equiv. no.
1	697199	for dough hook	115	42	62	until 08/2003	12 18 C F	Fimar	SL2542
2	697213	for dough hook	140	55	68	until 08/2003	25 38 C F	Fimar	SL2543

chains

connectors



Pos.	Part no.	DIN/ISO	splitting	suitable for	equiv. no.
1	697264	05 B 1	8mm	Fimar	SL1545
2	697069	06 B 1	3/8"	Alimacchine Fimar	02NT05 SL1629
3	697070	06 B 2	3/8"	Alimacchine	02NT20

Pos.	Part no.	DIN/ISO	splitting	suitable for	equiv. no.
4	693276	08 B 1	1/2"	Electrolux Fagor Fimar Zanussi	056863 Z105012 SL1632 056863
5	697222	10 B 1	5/8"	Fimar	SL2776

## roller chains 05B-1 single



Pos.	Part no.	DIN/ISO	splitting	links	suitable for	equiv. no.
1	697259	05 B 1	8mm	63	Fimar	SL1118
2	697282	05 B 1	8mm	71	Fimar	SL2682

Pos.	Part no.	DIN/ISO	splitting	links	suitable for	equiv. no.
3	697260	05 B 1	8mm	72,5	Fimar	SL0057

## roller chains 06B-1 single



Pos.	Part no.	DIN/ISO	splitting	links	suitable for	equiv. no.
1	697064	06 B 1	3/8" / 9,525mm	22	Alimacchine	01NT05
2	697081	06 B 1	3/8" / 9,525mm	23	Alimacchine	40NT05
3	697082	06 B 1	3/8" / 9,525mm	27	Alimacchine	40NT20
4	697200	06 B 1	3/8" / 9,525mm	35	Fimar	SL1111
5	697204	06 B 1	3/8" / 9,525mm	36	Fimar	SL2681
6	697202	06 B 1	3/8" / 9,525mm	37,5	Fimar	SL0026
7	697203	06 B 1	3/8" / 9,525mm	38,5	Fimar	SL2680
8	697201	06 B 1	3/8" / 9,525mm	40	Fimar	SL0025
9	697077	06 B 1	3/8" / 9,525mm	41,5	Alimacchine	41NT05
10	697127	06 B 1	3/8" / 9,525mm	42	Mecnosud Pizza Group	CA 3/8 (42anelli IM18T Spirale) 8300870
11	697078	06 B 1	3/8" / 9,525mm	48	Alimacchine	41NT20
12	697126	06 B 1	3/8" / 9,525mm	63	Pizza Group	8300210
13	697261	06 B 1	3/8" / 9,525mm	67,5	Fimar	SL0101
14	697283	06 B 1	3/8" / 9,525mm	69,5	Fimar	SL2686
15	697262	06 B 1	3/8" / 9,525mm	71	Fimar	SL0102
16	697112	06 B 1	3/8" / 9,525mm	74	Pizza Group	8300220
17	697263	06 B 1	3/8" / 9,525mm	88	Fimar	SL2741

## roller chains 06B-2 double



Pos.	Part no.	DIN/ISO	splitting	links	suitable for	equiv. no.
1	697065	06 B 2	3/8"	26	Alimacchine	01NT20
2	697066	06 B 2	3/8"	30	Alimacchine	01NT40
3	697068	06 B 2	3/8"	31	Alimacchine	01NT70
4	697083	06 B 2	3/8"	34	Alimacchine	40NT40

Pos.	Part no.	DIN/ISO	splitting	links	suitable for	equiv. no.
5	697067	06 B 2	3/8"	34	Alimacchine	01NT50
6	697084	06 B 2	3/8"	40	Alimacchine	40NT50
7	697079	06 B 2	3/8"	51	Alimacchine	41NT40
8	697080	06 B 2	3/8"	56,5	Alimacchine	41NT50

## roller chains 08B-1 single



Pos.	Part no.	DIN/ISO	splitting	links	suitable for	equiv. no.
1	693275	08 B 1	½" / 12,7mm	23,5	Electrolux Zanussi	056862 056862
2	697219	08 B 1	½" / 12,7mm	33,5	Fimar	SL0078
3	697220	08 B 1	½" / 12,7mm	34,5	Fimar	SL3438
4	697128	08 B 1	½" / 12,7mm	37	Cuppone Pizza Group	92410817 8300880

## roller chains 10B-1 single



Pos.	Part no.	DIN/ISO	splitting	links	suitable for	equiv. no.
1	697221	10 B 1	5/8" / 15,875mm	33	Fimar	SL2740

## dough hooks with mounting groove



Pos.	Part no.	spindle ø (mm)	effective height (mm)	for device	suitable for	equiv. no.
1	697041			NT05	Alimacchine	23NT05
2	697113			SP20	Moretti	71336030C
3	697042	15	279	NT10	Alimacchine	23NT10
4	697151	17	225	7 S	Fimar	SL1107
5	697117	17	235	12 18 S C F	Fimar	SL0011
6	697152	20	240	12 18 C F	Fimar	SL2628
7	697306	20	275		GAM	RIMPA203014
8	697098	20	345	NT20 30	Alimacchine	23NT20 20mm
9	697001	25	350	NT20 30	Alimacchine	23NT20 25mm
10	697002	25	470	NT40	Alimacchine	23NT40 25mm
11	697003	30	395	NT40	Alimacchine	23NT40 30mm
12	697312	30	435		OEM	AH095
13	697000	30	490	NT50 70	Alimacchine	23NT50 30mm
14	697099	35	470	NT50 70	Alimacchine	23NT50 35mm

# Food preparation equipment *dough mixers*

with mounting thread



Pos.	Part no.	TS	effective height (mm)	for device	suitable for	equiv. no.
1	697316	M18x1,5	220	17 22 TF TR	Pizza Group	8300480
2	697153	M18x1,5	290	25 38 S C F	Fimar	SL0069
3	697317	M22x1,5	285	33 42 53 TF TR	Pizza Group	8300490
4	697287	M22x1,5	290	IM25T IM38T	Mecnosud	spiral hook IM
5	697154	M24x2	360	50 S C F	Fimar	SL1369

dough separator

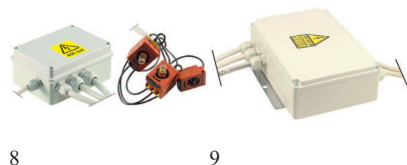


Pos.	Part no.	L (mm)	B (mm)	thickness (mm)	LA (mm)	Lø (mm)	for device	suitable for	equiv. no.
1	697167	282	25	12	45	9	7 S	Fimar	SL1108
2	697168	300	25	12	45	9	12 18 S C F	Fimar	SL0013
3	697339	330	30	10	60	11	17 22 TF TR	Pizza Group	8301210
4	697169	367	25	12	45	11	25 38 S C F	Fimar	SL0071
5	697340	405	30	10	60	12	TF TR 33	Pizza Group	8301220
6	697170	490	25	20	45	11	50 S C F	Fimar	SL2726

electrical parts  
control boxes

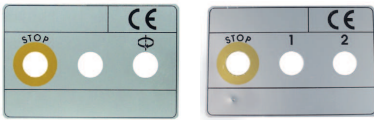


Pos.	Part no.	voltage (V)	suitable for	equiv. no.
1	401369	230	Alimacchine	93NT05 230V
2	346589	230	Fimar	SL0935
3	401684	400	Pizza Group	8301030
4	697006	400	Alimacchine	NT20 93 3 phase
5	401885	400		
6	346590	400	Fimar	SL0934
7	401371	400	Alimacchine	93NT20 400V



Pos.	Part no.	voltage (V)	function	suitable for	equiv. no.
8	401372	400	2 speeds	Alimacchine	93NT20 400V 2V
9	346591	400	2 speeds	Fimar	SL0952

front plates



1

2

Pos.	Part no.	L (mm)	B (mm)	for device	suitable for	equiv. no.
1	697095	160	105	1 speed	Alimacchine	111NT05
2	697096	160	105	2 speeds	Alimacchine	111NT40 2V

keypads



1

Pos.	Part no.	L (mm)	B (mm)	for device	suitable for	equiv. no.
1	401851	130	123		Sammic	2504482

lamps



1

Pos.	Part no.	mounting measures (mm)	socket type	connection	suitable for	equiv. no.
1	346408	ø22	Ba9s	Faston 6,3mm	Alimacchine	106NT05

accessories



1

2

3

Pos.	Part no.	description	suitable for	equiv. no.
1	346407	gasket for lamp ED ø 26mm ID ø 21,5mm	Alimacchine	108NT05
2	346410	lens green	Alimacchine	107NT05
3	346406	nut for lamp	Alimacchine	96NT05

## micro-switches



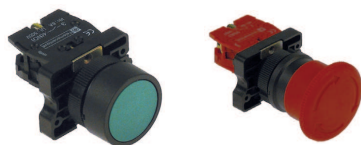
Pos.	Part no.	description	suitable for	equiv. no.
1	345485	micro switch L 47mm 1CO 20A	Pizza Group	8300990
2	345041	micro switch with roller lever	Ambach Aristarco Electrolux Fimar INCO S.L. Juno Sammic	5060909894 925 0H6597 SL0885 345041 0H6597 2509124
3	345138	micro switch with pushbutton M12x1 16A L1 13mm	Fimar Küppersbusch	SL1401 177160
4	346405	position switch 1NO/1NC	Alimacchine	81NT05

## rotary switches



Pos.	Part no.	function	switching capacity (A)	number of poles (poles)	suitable for	equiv. no.
1	345431	0 1	20	2	Pizza Group	8301310

## switches and momentary switches



Pos.	Part no.	description	suitable for	equiv. no.
1	345435	momentary push button switch mounting $\varnothing$ 22mm 1NO	Pizza Group	8301060
2	345461	mushroom switch mounting $\varnothing$ 22mm 1NC	Pizza Group	8301050

## transformers



Pos.	Part no.	power (VA)	primary voltage (V)	secondary voltage (V)	suitable for	equiv. no.
1	400783	12	400	24	Pizza Group	8301350



## equipment feet



1

2

3

Pos.	Part no.	description	suitable for	equiv. no.
1	697329	bolt for foot ø 20mm H 30mm M12	Pizza Group	8301330
2	697097	foot ø 29mm H 25mm bore diameter 6,5mm	Alimacchine	112NT05
3	697330	foot ø 35mm H 38mm bore diameter 20mm	Pizza Group	8301340

## flange bearings



Pos.	Part no.	type	spindle ø (mm)	LA (mm)	suitable for	equiv. no.
1	693112	UCF204	20	64	Fimar Firex Giga Lotus Offcar Pizza Group Silko Star10	SL2647 20400012 X61500 20400012 FX20400012 8300830 0100430 X61400
2	697278	UCF205	25	70	Fimar Pizza Group	SL0086 8300840
3	697279	UCF206	30	83	Fimar	SL2647

## gas pressure springs



Pos.	Part no.	extension force (N)	hub (mm)	LA (mm)	Lø (mm)	for device	suitable for	equiv. no.
1	697271	350	85	228	6,2	12 18 C F	Fimar	SL2667
2	697272	700	90	255	8,2	25 38 C F	Fimar	SL2668
3	697273	1300	145	385	8,5	50 C F	Fimar	SL2843

## gearboxes



Pos.	Part no.	motor shaft ø (mm)	Fø (mm)	transmission	drive shaft ø (mm)	Fø1	type	suitable for	equiv. no.
1	697274	11	140	1/30	19	140	width A/F 040	Fimar	SL1113
2	697275	14	160	1/28	24	160	RMI 50FL	Fimar	SL0042
3	697276	19	160	1/28	28	200	RMI 70FL	Fimar	SL0093
4	697277	24	200	1/28	32	200	RMI 85FL	Fimar	SL2642

## lids plastic



Pos.	Part no.	∅ (mm)	for device	suitable for	equiv. no.
1	697139	287	7 S	Fimar	SL1105
2	697140	335	12 S C F	Fimar	SA1004
3	697141	376	18 S C F	Fimar	SA1005

Pos.	Part no.	∅ (mm)	for device	suitable for	equiv. no.
4	697142	415	25 S C F	Fimar	SA1006
5	697143	465	38 S C F	Fimar	SA1007

## protective grid



Pos.	Part no.	∅ (mm)	for device	suitable for	equiv. no.
1	697320	340	17	Pizza Group	8300000
2	697321	380	22	Pizza Group	8300010

Pos.	Part no.	∅ (mm)	for device	suitable for	equiv. no.
3	697322	420	33	Pizza Group	8300020
4	697144	525	50 S C F	Fimar	SL2711

## stainless steel



Pos.	Part no.	for device	suitable for	equiv. no.
1	697022	NT05	Alimacchine	67NT05
2	697023	NT10	Alimacchine	67NT10
3	697024	NT20	Alimacchine	67NT20
4	697025	NT30	Alimacchine	67NT30

Pos.	Part no.	for device	suitable for	equiv. no.
5	697026	NT40	Alimacchine	67NT40
6	697027	NT50	Alimacchine	67NT50
7	697028	NT70	Alimacchine	67NT70

## locking levers



Pos.	Part no.	TS	th.le (mm)	suitable for	equiv. no.
1	697265	M10	90	Fimar	SL2629
2	697266	M12	109	Fimar	SL2630

Pos.	Part no.	TS	th.le (mm)	suitable for	equiv. no.
3	697267	M14	97	Fimar	SL2841

motors  
with flange B14



Pos.	Part no.	P (kW)	voltage (V)	freq. (Hz)	phase	spindle ø (mm)	Fø (mm)	speed (rpm)	type	suitable for	equiv. no.
1	500471	1,1	400	50	3	19	120	1400	YS8034	Pizza Group	8300530
2	500472	2	400	50	3	24	140	1400	YS9034	Pizza Group	8300540

with flange B5



Pos.	Part no.	P (kW)	voltage (V)	freq. (Hz)	phase	spindle ø (mm)	Fø (mm)	speed (rpm)	type	suitable for	equiv. no.
1	500845		230		1					Alimacchine	25NT40 230V
2	500842		230		1					Alimacchine	25NT30 230V
3	500838		230		1					Alimacchine	25NT10 230V
4	500837		230		1					Alimacchine	25NT05 230V
5	500843		400		3					Alimacchine	25NT30 400V
6	500846		400		3					Alimacchine	25NT40 400V
7	500847		400		3					Alimacchine	25NT40 400V 2V
8	500849		400		3			1400/2800		Alimacchine	25NT70 400V 2V
9	500848		400		3			1400/2800		Alimacchine	25NT50 400V 2V
10	500844		400		3			1400/2800		Alimacchine	25NT30 400V 2V
11	500841		400	50	3			1400/2800		Alimacchine	25NT20 400V 2V
12	500883	0,37	230	50	1	11	140	1400	M71BL4	Fimar	SL1112
13	500884	0,37	230/400	50	3	11	140	1400	71	Fimar	SL1120
14	500887	0,6/0,8	400	50	3	14	160	1400/2800	DN80B2/4	Fimar	SL0939
15	500885	0,75	230	50	1	14	160	1400	M80BL4	Fimar	SL0041
16	500839	0,75	230	50	1	19	160	1400	80/4	Alimacchine	25NT20 230V
17	500886	0,75	230/400	50	3	14	160	1400	80	Fimar	SL0040
18	500840	0,75	230/400	50	3	19	160	1400	80/4	Alimacchine	25NT20 400V
19	500888	1,1	230	50	1	19	160	1400	M905B	Fimar	SL0090
20	500889	1,1	230/400	50	3	19	160	1400	90	Fimar	SL0089
21	500893	1,3/1,7	400	50	3	19	160	1400/2800	90L	Fimar	SL0919
22	500891	1,5	230	50	1	19	160	1400	M90L4	Fimar	SL0092
23	500892	1,5	230/400	50	3	19	160	1400	90	Fimar	SL0091
24	500890	1/1,4	400	50	3	19	160	1400/2800	DN90S2/4	Fimar	SL0940
25	500894	2,2	230/400	50	3	24	200	1400	100	Fimar	SL2643
26	500895	2,6/3,37	400	50	3	24	200	1400/2800	100	Fimar	SL2718

bowls  
fasteners  
bolts



Pos.	Part no.	suitable for	equiv. no.
1	697176	Fimar	SL2622
2	697177	Fimar	SL2623

Pos.	Part no.	suitable for	equiv. no.
3	697178	Fimar	SL1932

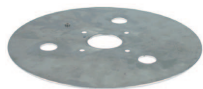
sealing rings



Pos.	Part no.	suitable for	equiv. no.
1	697181	Fimar	SL1334
2	697179	Fimar	SL1890

Pos.	Part no.	suitable for	equiv. no.
3	697180	Fimar	SL1034

transmission parts  
drive flanges



Pos.	Part no.	ø (mm)	int. ø (mm)	thickness (mm)	for device	suitable for	equiv. no.
1	697173	280	50	3	12 18 C	Fimar	SL2635
2	697174	330	60	4	25 38 C	Fimar	SL2636
3	697175	430	60	6	50 C	Fimar	SL1302

flanges



Pos.	Part no.	ø (mm)	D1 ø (mm)	thickness (mm)	for device	suitable for	equiv. no.
1	697191				25 38 F	Fimar	SL2867
2	697190	105	50	23	12 18 F	Fimar	SL2866
3	697187	120	50	20	12 18 C	Fimar	SL2620
4	697188	180	60	22	25 38 C	Fimar	SL2621
5	697192	180	60	28	50 F	Fimar	SL2868
6	697189	210	60	26	50 C	Fimar	SL2839

mounting flanges



Pos.	Part no.	ø (mm)	int. ø (mm)	thickness (mm)	for device	suitable for	equiv. no.
1	697182	300	113	3	12 C	Fimar	SL2632
2	697183	340	113	3	18 C	Fimar	SL2633
3	697184	380	168	4	25 C	Fimar	SL2637
4	697185	430	168	4	38 C	Fimar	SL2634
5	697186	480	198	6	50 C	Fimar	SL1303

bowls



Pos.	Part no.	int. ø (mm)	H (mm)	version	for device	suitable for	equiv. no.
1	697034				NT05	Alimacchine	66NT05
2	697035				NT10	Alimacchine	66NT10
3	697037				NT30	Alimacchine	66NT30
4	697038				NT40	Alimacchine	66NT40
5	697039				NT50	Alimacchine	66NT50
6	697040				NT70	Alimacchine	66NT70
7	697155	260	200	attached	7 S	Fimar	SL1106
8	697156	320	210	attached	12 S F	Fimar	SL0008
9	697162	320	210	detachable	12 C	Fimar	SA1150
10	697157	360	210	attached	18 S F	Fimar	SL0009
11	697163	360	210	detachable	18 C	Fimar	SA1160
12	697036	365	255	attached	NT20	Alimacchine	66NT20
13	697158	400	260	attached	25 S F	Fimar	SL0067
14	697164	400	260	detachable	25 C	Fimar	SA1170
15	697159	450	260	attached	38 S F	Fimar	SL0068
16	697165	450	260	detachable	38 C	Fimar	SA1180
17	697161	500	310	attached	50 S F	Fimar	SL1304
18	697166	500	310	detachable	50 C	Fimar	SA1190

spacer rings



Pos.	Part no.	ø (mm)	int. ø (mm)	H (mm)	suitable for	equiv. no.
1	697100	20			Alimacchine	16NT20 20mm
2	697118	22	18	31,5	Fimar	SL0020
3	697053	23	15	12	Alimacchine	16NT05
4	697101	25			Alimacchine	14NT40 25mm
5	697195	25	21	31	Fimar	SL2618
6	697198	25	21	53	Fimar	SL2617
7	692028	27	21	7	OEM	AE03100

Pos.	Part no.	ø (mm)	int. ø (mm)	H (mm)	suitable for	equiv. no.
8	697048	28	20,5	11	Alimacchine	61NT05
9	697049	28	20,5	28	Alimacchine	61NT20
10	697102	30			Alimacchine	16NT50 30mm
11	692031	30	21	10,6	OEM	AE14700
12	697054	34	25	15	Alimacchine	16NT20 25mm
13	697210	35	26	24	Fimar	SL2619
14	697055	40	30	15	Alimacchine	16NT40 30mm



Pos.	Part no.	ø (mm)	int. ø (mm)	H (mm)	suitable for	equiv. no.
15	698189	40	35	22	IGF	2400/S25Z40

Pos.	Part no.	ø (mm)	int. ø (mm)	H (mm)	suitable for	equiv. no.
16	697056	45	35	15	Alimacchine	16NT50 35mm

## spindles for lids



Pos.	Part no.	ø (mm)	L (mm)	suitable for	equiv. no.
1	697029	12	242	Alimacchine	73NT05
2	697030	12	275	Alimacchine	73NT20
3	697031	12	305	Alimacchine	73NT40
4	697032	12	345	Alimacchine	73NT50
5	697033	12	395	Alimacchine	73NT70
6	697145	15	173	Fimar	SL1110

Pos.	Part no.	ø (mm)	L (mm)	suitable for	equiv. no.
7	697146	15	199	Fimar	SL0021
8	697136	15	210	Pizza Group	8300260
9	697147	15	244	Fimar	SL0076
10	697137	15	250	Pizza Group	8300270
11	697148	15	283	Fimar	SL2727

## for mixer bowls



Pos.	Part no.	ø (mm)	D1 ø (mm)	L (mm)	for device	suitable for	equiv. no.
1	697114	17	20	127	7 12 18 S C F	Fimar	SL0014
2	697115	20	25	138	25 38 S C F	Fimar	SL0072
3	697258	25	30	160	50 S C F	Fimar	SL2728
4	697135	25	30	176		Pizza Group	8300250

## miscellaneous



Pos.	Part no.	ø (mm)	L (mm)	suitable for	equiv. no.
1	697268	12	170	Fimar	SL2624
2	697269	12	190	Fimar	SL2625

Pos.	Part no.	ø (mm)	L (mm)	suitable for	equiv. no.
3	697270	12	234	Fimar	SL2842

toothed wheels  
for 05 B-1 chains 8mm



Pos.	Part no.	teeth	shaft intake ø (mm)	for device	suitable for	equiv. no.
1	697240	16	20	7 12 18 S C F	Fimar	SL0044



Pos.	Part no.	teeth	shaft intake ø (mm)	for device	suitable for	equiv. no.
1	697254	76	50	7 S	Fimar	SL1117
2	697255	85	50	12 18 S C F	Fimar	SL0057

for 06 B-1 chains 3/8"



Pos.	Part no.	teeth	shaft intake ø (mm)	for device	suitable for	equiv. no.
1	697057	13	15	NT05 10	Alimacchine	07NT05
2	697134	14	22	17 22 TF TR	Pizza Group	8300710
3	697193	15	17	7 12 18 S C F	Fimar	SL0024
4	697132	15	25	17 22 TF TR	Pizza Group	8300410
5	697241	16	25	25 38 S C F	Fimar Pizza Group	SL0094 8300720
6	697061	17	20	NT05 10	Alimacchine	03NT05
7	697242	20	30	50 S C F	Fimar	SL2645
8	697206	29	17	7 12 18 S C F	Fimar	SL0030
9	697129	29	20	17 22 TF TR	Pizza Group	8300850



Pos.	Part no.	teeth	shaft intake ø (mm)	for device	suitable for	equiv. no.
1	697131	72	60	17 22 TF TR	Pizza Group	8300230
2	697256	85	60	25 38 S C F	Fimar Pizza Group	SL0100 8300240
3	697257	110	80	50 S C F	Fimar	SL2646



Pos.	Part no.	teeth	shaft intake ø (mm)	for device	suitable for	equiv. no.
1	697089	12/30	20	NT05 10 20 30	Alimacchine	39NT05

for 06 B-2 chains 3/8"



Pos.	Part no.	teeth	shaft intake ø (mm)	for device	suitable for	equiv. no.
1	697103	14	20	NT20 30	Alimacchine	07NT20 20mm
2	697058	14	25	NT20 30	Alimacchine	07NT20 25mm
3	697062	18	20	NT20 30	Alimacchine	03NT20
4	697104	19	25	NT40	Alimacchine	07NT40 25mm
5	697059	19	30	NT40 50 70	Alimacchine	07NT40 30mm
6	697060	19	35	NT50 70	Alimacchine	07NT50 35mm
7	697063	28	25	NT40 50 70	Alimacchine	03NT40



Pos.	Part no.	teeth	shaft intake ø (mm)	for device	suitable for	equiv. no.
1	697090	14/39		NT40 50 70	Alimacchine	39NT40

for 08 B-1 chains 1/2"



Pos.	Part no.	teeth	shaft intake ø (mm)	for device	suitable for	equiv. no.
1	697776	15	20		IGF	2200/S38Z01
2	697209	15	20	25 38 C F	Fimar	SL2691
3	697207	15	30	25 38 S C F	Fimar	SA8400
4	697133	15	30	33 42 53 TF TR	Pizza Group	8300420
5	698187	15	35	25	IGF	2400/S25Z38
6	697223	29	20	25 38 S C F	Fimar	SL0084
7	697130	29	25	33 42 53 TF TR	Pizza Group	8300860



for 10 B-1 chains 5/8"



Pos.	Part no.	teeth	shaft intake ø (mm)	for device	suitable for	equiv. no.
1	697214	15	25	50 S C F	Fimar	SL2733
2	697224	24	25	50 S C F	Fimar	SL2734

transmission parts  
couplings



Pos.	Part no.	ø (mm)	shaft intake ø (mm)	for device	suitable for	equiv. no.
1	697249	41	25	25 38 C F	Fimar	SL2525
2	697248	50	20	12 18 C F	Fimar	SL2524
3	697250	60	30	50 C F	Fimar	SL2831

drive shafts  
for couplings

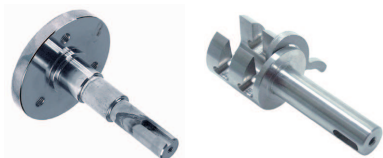


Pos.	Part no.	ø (mm)	D1 ø (mm)	L (mm)	for device	suitable for	equiv. no.
1	697245	17	20	113	12 18 C F	Fimar	SL2615
2	697246	20	25	106	25 38 C F	Fimar	SL2616
3	697247	25	30	162	50 C	Fimar	SL2832

for dough hooks



Pos.	Part no.	ø (mm)	D1 ø (mm)	D2 ø (mm)	L (mm)	internal thread	int. ø (mm)	for device	suitable for	equiv. no.
1	697212	20	25	30	150	M18x1,5		25 38 C F	Fimar	SL2614
2	697314	25	30		95	M18x1,5			Pizza Group	8300460
3	697217	25	30	40	160	M24x2		50 S C F	Fimar	SL2729
4	697315	30			92	M22x1,5		33 42 53 TF TR	Pizza Group	8300470
5	698188	35	38		110		20		IGF	2400/S25Z43



1

2

Pos.	Part no.	ø (mm)	D1 ø (mm)	D2 ø (mm)	L (mm)	TS	for device	suitable for	equiv. no.
1	692036	20	29	100	140	M10		OEM	AOEMKE100
2	697288	25	55		153		S30 S40	GAM	RIMPS30E19

## accessories



1

Pos.	Part no.	description	suitable for	equiv. no.
1	697289	for dough hook	GAM	RIMPS30E07

## for gearboxes



Pos.	Part no.	ø (mm)	D1 ø (mm)	D2 ø (mm)	L (mm)	version	for device	suitable for	equiv. no.
1	697228	19	20	17	450		7 S	Fimar	SL1116
2	697085	20			430			Alimacchine	37NT05
3	697086	20			510		NT20 30	Alimacchine	37NT20
4	697394	22	25	20	295			Pizza Group	8300810
5	697234	24	20	17	385	from 10/2003	12 18 C F	Fimar	SL2854
6	697233	24	20	17	458	until 10/2003	12 18 C F	Fimar	SL2611
7	697229	24	20	17	482		12 18 S	Fimar	SL0048
8	697087	25			610		NT40	Alimacchine	37NT40
9	697088	25			695		NT50 70	Alimacchine	37NT50
10	697335	25	20	20	487			Pizza Group	8300690
11	697336	25	25	25	545			Pizza Group	8301910
12	697235	28	25	20	464	from 08/2003	25 C F	Fimar	SL2855
13	697236	28	25	20	472	from 08/2003	38 C F	Fimar	SL2856
14	697230	28	25	20	526		25 S	Fimar	SL0097
15	697238	28	25	20	530	until 08/2003	25 C F	Fimar	SL2612
16	697231	28	25	20	542		38 S	Fimar	SL0098
17	697239	28	25	20	544	until 08/2003	38 C F	Fimar	SL2613
18	697337	28	25	25	545			Pizza Group	8300700
19	697237	32	30	25	592		50 C F	Fimar	SL2840
20	697232	32	30	25	740		50 S	Fimar	SL2730

for mixer bowls



Pos.	Part no.	version	ø (mm)	L (mm)	teeth	for device
1	697045	with toothed chain drive	20	122	12	NT05 10
2	697046	with toothed chain drive	20	142	12	NT20 30



Pos.	Part no.	version	ø (mm)	L (mm)	teeth	for device
1	697047	with toothed chain drive	20	185	12	NT40 50 70

drive belt pulleys



Pos.	Part no.	disc ø (mm)	version	shaft intake ø (mm)	suitable for	equiv. no.
1	697009	207	single	20	Alimacchine	45NT05
2	697010	287	single	20	Alimacchine	45NT20
3	697011	308	2 fold	20	Alimacchine	45NT40



Pos.	Part no.	disc ø (mm)	version	shaft intake ø (mm)	suitable for	equiv. no.
1	697091	44	single	19	Alimacchine	34NT05
2	697094	45	double	28	Alimacchine	34NT50
3	697092	48	single	24	Alimacchine	34NT30
4	697093	58	double	24	Alimacchine	34NT40

## V-belts



Pos.	Part no.	CODE	belt width (mm)	L (mm)	H (mm)	suitable for	equiv. no.
1	697071	A32	13	813	8	Alimacchine	44NT05
2	697072	A42	13	1067	8	Alimacchine	44NT20
3	697073	A43	13	1092	8	Alimacchine	44NT30
4	697074	A49	13	1250	8	Alimacchine	44NT40
5	697075	A52	13	1320	8	Alimacchine	44NT50
6	697076	A56	13	1422	8	Alimacchine	44NT70

## miscellaneous



Pos.	Part no.	description	suitable for	equiv. no.
1	697149	for lid ID ø 15mm M8	Fimar	SL0035
2	697350	bush for lid	Pizza Group	8300370
3	697043	bush for micro switch	Alimacchine	71NT05
4	697150	bush for micro switch ID ø 15mm	Fimar	SL0036
5	560292	eye bolt for motor L 55mm M10	Alimacchine	32NT05
6	697318	flange for gearbox ø 100mm ID ø 70mm	Pizza Group	8301590
7	697319	flange for gearbox ø 140mm ID ø 95mm	Pizza Group	8301600



Pos.	Part no.	description	suitable for	equiv. no.
8	697281	protective cover L 205mm H 125mm	Fimar	SL2638
9	697044	stop bolt for lid ø 15mm L 25mm M6	Alimacchine	83NT05
10	697353	stop bolt for lid ø 20mm L 15mm	Pizza Group	8301270
11	700195	swivel castor with caging device ø 75mm M12	Pizza Group	8301570
12	700206	swivel castor without caging device ø 75mm M12	Pizza Group	8301580
13	560295	tightening rod M10 L 130mm steel zinc coated	Alimacchine	27NT05
14	560296	tightening rod M10 L 145mm steel zinc coated	Alimacchine	27NT50



Pos.	Part no.	description	suitable for	equiv. no.
15	560297	tightening rod M10 L 180mm steel zinc coated	Alimacchine	27NT70

**GASTROPARTS.COM**



© 2020 Gastroparts Sp. J. All rights reserved.