



**GASTROPARTS**

Food Preparation ›

# [EN] Meat grinders

[DE] Fleischwölfe

[ES] Picadoras de carne

[FR] Hachoirs à viande

[IT] Tritacarne

[PL] Wilki do mięsa

[RU] Мясорубки

✉ [gastroparts@gastroparts.com](mailto:gastroparts@gastroparts.com)

☎ tel. +48 56 657 00 66

📘 [fb.com/gastroparts.global](https://fb.com/gastroparts.global)

**GASTROPARTS.COM**



**meat mincers**

augers  
complete



Pos.	Part no.	type	material	suitable for	equiv. no.
1	698035	Mod.12	aluminium	Fama Sirman Star10	F2122 MF0126 AM.F2122
2	698036	Mod.12	cast iron	Fama Sirman Star10	F2123 MF0125 AM.F2123
3	698043	Mod.12	cast iron	Fama Sirman	F2125 MF2125
4	698044	Mod.12	stainless steel	Fama Sirman	F2126 MF2126
5	698037	Mod.12	stainless steel	Fama Sirman Star10	F2124 MF0126 AM.F2124
6	698160	Mod.12	stainless steel	Sirman	IV2520505L
7	698053	Mod.22	aluminium	Fama Sirman Star10	F2214 MF0183 AM.F2214
8	698063	Mod.22	cast iron	Fama Sirman	F2242 MF0356
9	698054	Mod.22	cast iron	Fama Sirman Star10	F2215 MF0182 AM.F2215
10	698062	Mod.22	stainless steel	Fama Sirman	F2251 MF0199
11	698055	Mod.22	stainless steel	Fama Sirman Star10	F2216 MF0184 AM.F2216
12	698228	Mod.8	aluminium	Sirman	29030301
13	698021	Mod.8	aluminium	Fama Star10	F2041 AM.F2041
14	698252	Mod.8	stainless steel	Fama	F2042M+F2043M
15	698022	Mod.8	stainless steel	Fama	F2042

without bolt



Pos.	Part no.	type	material	suitable for	equiv. no.
1	698170	Mod.12	stainless steel	Sirman	LF2038010
2	698105	Mod.12	stainless steel	Sirman	LF2031002
3	698132	Mod.22	cast iron	Sirman	LF2032502
4	698171	Mod.22	stainless steel	Sirman	LF2038310
5	698109	Mod.22	stainless steel	Sirman	LF2032006

Pos.	Part no.	type	material	suitable for	equiv. no.
6	698134	Mod.32	cast iron	Sirman	LF2032606
7	698173	Mod.32	stainless steel	Sirman	LF2039703
8	698172	Mod.32	stainless steel	Sirman	LF2038610
9	698141	Mod.32	stainless steel	Sirman	LF2033102
10	698145	Mod.42	stainless steel	Sirman	LF2034102

# Food preparation equipment *meat mincers*

## augers chambers inner parts



Pos.	Part no.	version	type	material	suitable for	equiv. no.
1	698033	Standard	Mod.12	aluminium	Fama Sirman Star10	F2119 MF0122 AM.F2119
2	698032	Standard	Mod.12	cast iron	Fama Sirman Star10	F2117 MF0272 AM.F2117
3	698104	Standard	Mod.12	stainless steel	Sirman	LF2031001
4	698034	Standard	Mod.12	stainless steel	Fama Sirman Star10	F2118 MF0123 AM.F2118
5	698050	Standard	Mod.22	aluminium	Fama Sirman Star10	F2212 MF0180 AM.F2212
6	698051	Standard	Mod.22	cast iron	Fama Sirman Star10	F2210 MF0179 AM.F2210
7	698108	Standard	Mod.22	stainless steel	Sirman	LF2032005
8	698052	Standard	Mod.22	stainless steel	Fama Sirman Star10	F2211 MF0181 AM.F2211
9	698169	Standard	Mod.32	stainless steel	Sirman	LF2033101
10	698041	Unger	Mod.12	cast iron	Fama Sirman	F2120 MF2120
11	698042	Unger	Mod.12	stainless steel	Fama Sirman	F2121 MF2121
12	698059	Unger	Mod.22	cast iron	Fama Sirman	F2240 MF0355
13	698061	Unger	Mod.22	cast iron	Fama Sirman	F2255 MF0198
14	698060	Unger	Mod.22	stainless steel	Fama Sirman	F2250 MF0354

## outer parts



Pos.	Part no.	version	type	material	suitable for	equiv. no.
1	698232	Standard	Mod.12	stainless steel	Sirman	IV2540500L
2	698230	Standard	Mod.8	aluminium	Sirman	29030201
3	698250	Standard	Mod.8	nickel plated aluminium	Fama	F2039M

## blades ENTERPRISE



Pos.	Part no.	type	Ø (mm)	Pos.	Part no.	type	Ø (mm)	Pos.	Part no.	type	Ø (mm)	Pos.	Part no.	type	Ø (mm)
1	696021	8	55	2	696022	12	62	3	696023	22	73	4	696033	32	90
												5	696034	42	120

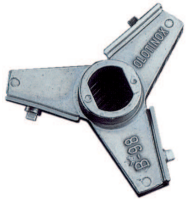
UNGER



Pos.	Part no.	type	ø (mm)
1	696032	B 98 (32)	90
2	696031	H 82 (22)	73

Pos.	Part no.	type	ø (mm)
3	696030	R 70 (12)	62

OLOTINOX  
blades



Pos.	Part no.	type	ø (mm)
1	696326	B 98 (32)	90
2	696327	E 130 (42)	120

Pos.	Part no.	type	ø (mm)
3	696325	H 82 (22)	73
4	696324	R 70 (12)	62

spare blades



Pos.	Part no.	type	Qty (pc)
1	696330	B 98 (32)	3
2	696331	E 130 (42)	4

Pos.	Part no.	type	Qty (pc)
3	696329	H 82 (22)	3

Pos.	Part no.	type	Qty (pc)
4	696328	R 70 (12)	3

SALVINOX  
blades



Pos.	Part no.	type	ø (mm)
1	696028	B 98 (32)	90
2	696026	H 82 (22)	73

Pos.	Part no.	type	ø (mm)
3	696024	R 70 (12)	62

spare blades



Pos.	Part no.	type	Qty (pc)
1	696029	B 98 (32)	9
2	696027	H 82 (22)	9

Pos.	Part no.	type	Qty (pc)
3	696025	R 70 (12)	9

## ring nuts



Pos.	Part no.	type	material	suitable for	equiv. no.
1	698049	Mod.12	stainless steel	Fama Sirman	F2134 MF2134
2	698070	Mod.22	stainless steel	Fama Sirman	F2254 MF2254

Pos.	Part no.	type	material	suitable for	equiv. no.
3	698147	Mod.42	stainless steel	Sirman	LF2034103



Pos.	Part no.	type	material	suitable for	equiv. no.
1	698161	Mod.12	stainless steel	Sirman	IV2540505L

Pos.	Part no.	type	material	suitable for	equiv. no.
2	698231	Mod.8	aluminium	Sirman	29030401



Pos.	Part no.	type	material	suitable for	equiv. no.
1	698039	Mod.12	aluminium	Fama Sirman Star10	F2132 MF0132 AM.F2132
2	698107	Mod.12	stainless steel	Sirman	LF2031003
3	698040	Mod.12	stainless steel	Fama Sirman Star10	F2133 MF0133 AM.F2133
4	697123	Mod.12	stainless steel	Fimar	SL0171
5	698057	Mod.22	aluminium	Fama Sirman Star10	F2220 MF0187 AM.F2220
6	698133	Mod.22	cast iron	Sirman	LF2032503
7	698111	Mod.22	stainless steel	Sirman	LF2032007
8	698058	Mod.22	stainless steel	Fama Sirman Star10	F2221 MF0188 AM.F2221
9	698136	Mod.32	cast iron	Sirman	LF2032607
10	698138	Mod.32	stainless steel	Sirman	LF2033103
11	698024	Mod.8	aluminium	Fama Star10	F2046 AM.F2046
12	698251	Mod.8	nickel plated aluminium	Fama	F2046M

## trays



Pos.	Part no.	L (mm)	B (mm)	H (mm)
1	698112	255	195	50

Pos.	Part no.	L (mm)	B (mm)	H (mm)
2	698074	310	240	50



Pos.	Part no.	ø (mm)	H (mm)
1	698071	160	60

Pos.	Part no.	ø (mm)	H (mm)
2	698073	220	90

drive shafts  
for augers



Pos.	Part no.	ø (mm)	L (mm)	for device	suitable for	equiv. no.
1	698020	15	124	Mod.8	Fama	F2022
2	698159	16	95	Mod.12	Sirman	LF2037012
3	698031	17	78	Mod.12 22	Fama Sirman	F2109 MF0115
4	698150	17	128	Mod.12	Sirman	IV2080500
5	698103	20	153	Mod.12 22	Sirman	LF2032019
6	698165	25	121	Mod.12 22	Sirman	LF2039212
7	698168	25	169	MASTER30	Sirman	LF2095010
8	698166	25	170	Mod.32	Sirman	LF2039412
9	698167	25	205	MASTER30	Sirman	LF2039725

for blades  
ENTERPRISE



Pos.	Part no.	ø (mm)	D1 ø (mm)	L (mm)	TS	th.le (mm)	material	for device	suitable for	equiv. no.
1	698023	8,5		37	M10x1,5	15	stainless steel	Mod.8	Fama	F2043
2	698038	9,5	20	53	M12x1,75	20		Mod.12	Fama Sirman	F2127 MF0127
3	698106	9,6	21,5	74	M16x1,5	24		Mod.12	Sirman	LF2031004
4	698110	11	21,5	76	M16x1,5	24		Mod.22	Sirman	LF2032008
5	698056	11	22	53	M12x1,75	18		Mod.22	Fama Sirman	F2217 MF0194
6	698135	13	29,5	87	M16x1,5	28		Mod.32	Sirman	LF2033013
7	698146	20	34,5	113	M20x1,5	35		Mod.42	Sirman	LF2034004

## UNGER



Pos.	Part no.	ø (mm)	D1 ø (mm)	L (mm)	TS	th.le (mm)	material	for device	suitable for	equiv. no.
1	698066	15	22	60	M12x1,75	20	stainless steel	Mod.22	Fama Sirman	F2252 MF0200
2	698046	11,3	20	63	M12x1,75	20	stainless steel	Mod.12	Fama	F2129

## gear parts bodies



1

Pos.	Part no.	version	material	for device	suitable for	equiv. no.
1	698243	for gearbox	aluminium	Mod.12	Fama Sirman	F2110 MF2110

## spindles



1



2

Pos.	Part no.	ø (mm)	D1 ø (mm)	L (mm)	total length (mm)	TS	for device	suitable for	equiv. no.
1	698030	15		37	52	M14x1,5	Mod.12 22	Fama Sirman	F2102 MF0108
2	698102	16	25	42	71	M12x1,5	Mod.12 22	Sirman	LF2032011

## toothed wheels



Pos.	Part no.	shaft intake ø (mm)	ø (mm)	teeth	tooth width (mm)	for device	suitable for	equiv. no.
1	698027	10	25	13	20	Mod.12 22	Fama Sirman	F2104 MF0111
2	698019	15	34	19	19	Mod.8	Fama	F2020
3	698029	16	64	39	13	Mod.12 22	Fama Sirman	F2107 MF0112
4	698149	17	61	27	20	Mod.12	Sirman	IV2330500
5	697309	25	105	49	13	Mod.22	Fimar	SL0242



Pos.	Part no.	shaft intake ø (mm)	ø (mm)	teeth	tooth width (mm)	B (mm)	for device	suitable for	equiv. no.
1	698205	15	32/70	18/41	14/11	30	Mod.12 22	Angelo Po Fimar	36G0390 SL0125
2	698028	15	32/70	18/41	14/11	30	Mod.12 22	Fama Sirman	F2106 MF0110
3	697310	17	49/100	21/47	16/16	38	Mod.22	Fimar	SL0243

spindle



Pos.	Part no.	shaft intake ø (mm)	ø (mm)	B (mm)	for device	suitable for	equiv. no.
1	698148	17	35,5	45	Mod.12	Sirman	IV2320500

sets

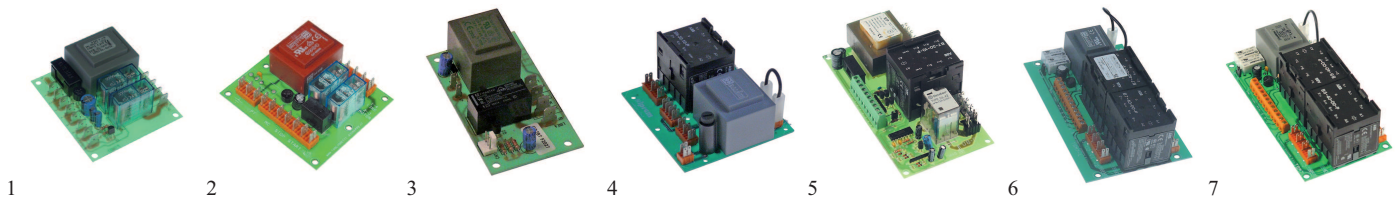


Pos.	Part no.	suitable for	equiv. no.
1	698139	Sirman	LF2034010
2	698130	Sirman	LF2032608

Pos.	Part no.	suitable for	equiv. no.
3	698101	Sirman	LF2032010

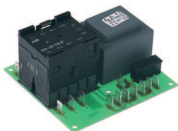
electrical parts

PCBs



Pos.	Part no.	voltage (V)	for device	suitable for	equiv. no.
1	401359	230	Mod.12	Fama Sirman Star10	F2140 MF0160 AM.F2140
2	401561	230	Mod.12 22	Sirman	IV5940500
3	401358	230	Mod.8	Fama Star10	F2027 AM.F2027
4	697124	230/400		Alimacchine Fimar IGF Mecnosud Sirman	Scheda Trifase SL0883 2200/S25TZ2 Scheda Elettrica B7 MF2141
5	401384	230/400		Sirman	LF1033010
6	401738	230/400	Mod.12	Sirman	IV5940505T
7	401385	230/400	Mod.12	Sirman	LF1033020





8

Pos.	Part no.	voltage (V)	for device	suitable for	equiv. no.
8	401360	400	Mod.12	Fama Sirman Star10	F2141 MF0159 AM.F2141

switches and momentary switches  
keypads



Pos.	Part no.	L (mm)	B (mm)	suitable for	equiv. no.
1	401735	130	41	Sirman	LF1033021
2	401378	130	41	Sirman	IV5940515T

Pos.	Part no.	L (mm)	B (mm)	suitable for	equiv. no.
3	401377	130	41	Sirman	LF1033011

momentary push switch



1

Pos.	Part no.	mounting measures (mm)	colour	number of poles (poles)	function	voltage (V)	switching capacity (A)	suitable for	equiv. no.
1	346368	30x22	white	2	2CO	250	16	Sirman	29410101

rotary switches



Pos.	Part no.	function	number of poles (poles)	switching capacity (A)	ext. ø (mm)	suitable for	equiv. no.
1	346238	1 with catch/2 tentative	2	12	43	Sirman	MF2364
2	346239	1 with catch/2 tentative	3	12	43	Sirman	MF2365

accessories



1

2

Pos.	Part no.	description	suitable for	equiv. no.
1	401379	keypad L 170mm W 170mm 3 buttons	Sirman	LF1039210
2	358003	rubber protection external size 60x30mm		

filling funnels



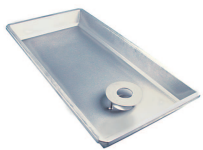
Pos.	Part no.	type	ø (mm)	delivery contents
1	698084	8		set with ø15mm / ø20mm / ø25mm
2	698082	8	15	
3	698083	8	20	
4	698085	12	15	
5	698086	12	20	
6	698087	12	25	
7	698095	12	30	
8	698088	22	15	

Pos.	Part no.	type	ø (mm)	delivery program
9	698089	22	20	
10	698090	22	25	
11	698096	22	30	
12	698097	32	15	
13	698098	32	20	
14	698099	32	25	
15	698100	32	30	

funnel trays

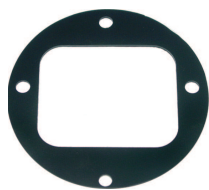


Pos.	Part no.	version	L (mm)	B (mm)	H (mm)	pipe ø (mm)	suitable for	equiv. no.
1	698077	filling pipe central	275	200	50	52	Fama Sirman Star10	F2038 MF0373 AM.F2038
2	698241	filling pipe central	275	200	60	56	Fama Star10	F2038 ø56mm AM.F2113
3	698179	filling pipe central	340	250	60	52	Sirman	IV2270500
4	698113	filling pipe central	340	250	60	56	Sirman	LF2032016
5	698076	filling pipe central	370	250	60	52	Fama Sirman Star10	F2207 ø52mm MF0181 AM.F2207
6	698208	filling pipe central	370	250	60	56	Fama	F2207 ø56mm
7	698175	filling pipe central	410	320	60	52	Sirman	LF2032805
8	698180	filling pipe left	410	310	60	56	Sirman	LF2039201B



Pos.	Part no.	version	L (mm)	B (mm)	H (mm)	pipe ø (mm)	suitable for	equiv. no.
1	698174	filling pipe central	500	350	70	76	Sirman	LF2033017
2	698176	filling pipe central	810	410	80	76	Sirman	LF2033503
3	698177	filling pipe central	850	470	80	108	Sirman	LF2034005
4	698181	filling pipe left	500	350	70	76	Sirman	LF2038607

## gaskets



Pos.	Part no.	application	ø (mm)	thickness (mm)	BA (mm)	material	for device	suitable for	equiv. no.
1	698018	for gearbox	110	2	94x97	rubber	Mod.8	Fama	F2012
2	698026	for gearbox	132	1	120	rubber	Mod.22	Fama	F2206

## for gearboxes



1

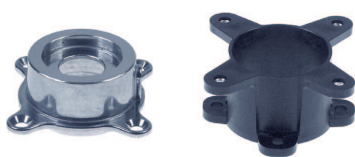
Pos.	Part no.	description	ext. ø (mm)	t (mm)	suitable for	equiv. no.
1	698253	lid ext. ø 35mm thickness 7mm	35	7	Fama	F2014M

## gearboxes



Pos.	Part no.	motor shaft ø (mm)	Fø (mm)	transmission	drive shaft ø (mm)	type	suitable for	equiv. no.
1	696204	11	90	1/30	14	30	Sirman	29401800
2	698164	19	120	1/49	25	FRS60	Sirman	LF2043015
3	698162	19	120	1/7	25	FRS60	Sirman	LF2039210
4	698163	19	120	1/7	25	FRS60	Sirman	LF2039414

## gearbox holders



1

2

Pos.	Part no.	material	ø (mm)	int. ø (mm)	Lø (mm)	BA (mm)	model	H (mm)	mounting distance 1 (mm)	suitable for	equiv. no.
1	698235	aluminium	57	42	7	84	Mod.8			Sirman	29030501
2	698237	plastic		51	7	65	Mod.8	40	84	Sirman	29661200

## lids



Pos.	Part no.	ø (mm)	BA (mm)	material	for device	suitable for	equiv. no.
1	698010	78	70	plastic	Mod.8	Fama Sirman	F2002 MF0002
2	698017	100	85	plastic	Mod.12 22	Fama Sirman	F2152 MF0367

locking screws

locking levers



Pos.	Part no.	TS	th.le (mm)	ø (mm)	lever length (mm)	material	for device	suitable for	equiv. no.
1	698093	M10	30	28	70	plastic		Fama Sirman	F2189 MF0352
2	698115	M25	20	25	65			Sirman	LF2032015
3	698184	M25	22	25	75		Mod.32	Sirman	LF2033016

locking screws



Pos.	Part no.	TS	th.le (mm)	handle ø (mm)	suitable for	equiv. no.
1	698092	M10	30	60	Fama Sirman Star10	F2115 MF0118 AM.F2115
2	698183	M8		40	Sirman	IV4200500

Pos.	Part no.	TS	th.le (mm)	handle ø (mm)	suitable for	equiv. no.
3	698091	M8	25	40	Fama	F2040

motors



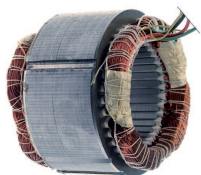
Pos.	Part no.	P (kW)	voltage (V)	freq. (Hz)	phase	spindle ø (mm)	Fø (mm)	speed (rpm)	type	suitable for	equiv. no.
1	500863		230		1					Sirman	LF1838603
2	500856		230		1					Sirman	LF1834002
3	500865		230		1					Sirman	LF1839703
4	500861		230		1					Sirman	LF1838303
5	500860		230		1					Sirman	LF2037050
6	500832		230		1					Sirman	LF1831002
7	500858		230		1					Sirman	IV5050802
8	500834		230		1					Sirman	LF1832002
9	500854		230		1					Sirman	LF1833502
10	500862		400		3					Sirman	LF1838301
11	500864		400		3					Sirman	LF1838601
12	500835		400		3					Sirman	LF1832001
13	500857		400		3					Sirman	LF1834001
14	500859		400		3					Sirman	IV5050803
15	500724	0,25	230	50	1	11	90	2800	MY632 2	Sirman	29401502
16	500866	3	230/400	50	3	19		1390	M112	Sirman	LF1839701

## rotors



Pos.	Part no.	voltage (V)	ø (mm)	spindle ø (mm)	WL (mm)	for device	suitable for	equiv. no.
1	697311		89,2	25	220	Mod.22	Fimar	SA6800
2	500726	230	89,2	25	357	Mod.12	Fama Sirman	F2095 MF2095A
3	500725	400	89,2	25	357	Mod.22	Fama Sirman	F2202 MF2202

## stators



Pos.	Part no.	voltage (V)	freq. (Hz)	number of poles (poles)	ø (mm)	int. ø (mm)	H (mm)	for device	suitable for	equiv. no.
1	500827	230	50	4	110	62	75	Mod.8	Fama	F2009
2	500825	230	50	4	110	66	60	Mod.8	Fama Sirman	F2077 MF0004
3	500828	230	50	4	150	90	70	Mod.12	Fama Sirman	F2096 MF0102
4	500830	230	50	6	150	103	90	Mod.22	Fama Sirman	F2203 MF0170
5	500829	400	50	4	150	83,6	50	Mod.12	Fama Sirman	F2097 MF0103
6	500831	400	50	6	150	90	70	Mod.22	Fama Sirman	F2204 MF0171

## grinder plates ENTERPRISE



Pos.	Part no.	type	Lø (mm)	ø (mm)	Pos.	Part no.	type	Lø (mm)	ø (mm)	Pos.	Part no.	type	Lø (mm)	ø (mm)
1	696101	8	3	62	18	696117	12	10	70	35	696134	22	18	82
2	696102	8	3,5	62	19	696118	12	12	70	36	696135	22	20	82
3	696103	8	4,5	62	20	696119	12	14	70	37	696136	32	1,5	98
4	696104	8	6	62	21	696120	12	16	70	38	696137	32	2	98
5	696105	8	8	62	22	696121	12	18	70	39	696138	32	3	98
6	696106	8	10	62	23	696122	12	20	70	40	696139	32	3,5	98
7	696107	8	12	62	24	696123	22	1,5	82	41	696140	32	4,5	98
8	696108	8	14	62	25	696124	22	2	82	42	696141	32	6	98
9	696109	8	16	62	26	696125	22	3	82	43	696142	32	7	98
10	696170	8	18	62	27	696126	22	3,5	82	44	696143	32	8	98
11	696110	12	1,5	70	28	696127	22	4,5	82	45	696144	32	10	98
12	696111	12	2	70	29	696128	22	6	82	46	696145	32	12	98
13	696112	12	3	70	30	696129	22	8	82	47	696146	32	14	98
14	696113	12	3,5	70	31	696130	22	10	82	48	696147	32	16	98
15	696114	12	4,5	70	32	696131	22	12	82	49	696148	32	18	98
16	696115	12	6	70	33	696132	22	14	82	50	696149	32	20	98
17	696116	12	8	70	34	696133	22	16	82	51	696150	42	3	130



Pos.	Part no.	type	Lø (mm)	ø (mm)
52	696151	42	3,5	130
53	696152	42	4,5	130
54	696153	42	6	130
55	696154	42	8	130

Pos.	Part no.	type	Lø (mm)	ø (mm)
56	696155	42	10	130
57	696156	42	12	130
58	696157	42	14	130

Pos.	Part no.	type	Lø (mm)	ø (mm)
59	696158	42	16	130
60	696159	42	18	130
61	696160	42	20	130

**UNGER**



Pos.	Part no.	type	Lø (mm)	construction	ø (mm)
1	696163	B 98 (32)		coarse	97,6
2	696309	B 98 (32)	3		97,6
3	696310	B 98 (32)	4,5		97,6
4	696311	B 98 (32)	6		97,6
5	696312	B 98 (32)	8		97,6
6	696313	B 98 (32)	10		97,6
7	696314	B 98 (32)	12		97,6
8	696315	B 98 (32)	16		97,6
9	696323	E 130 (42)		coarse	130
10	696316	E 130 (42)	3		130
11	696317	E 130 (42)	4,5		130
12	696318	E 130 (42)	6		130
13	696319	E 130 (42)	8		130
14	696320	E 130 (42)	10		130
15	696321	E 130 (42)	12		130
16	696322	E 130 (42)	16		130

Pos.	Part no.	type	Lø (mm)	construction	ø (mm)
17	696162	H 82 (22)		coarse	81,6
18	696302	H 82 (22)	3		81,6
19	696303	H 82 (22)	4,5		81,6
20	696304	H 82 (22)	6		81,6
21	696305	H 82 (22)	8		81,6
22	696306	H 82 (22)	10		81,6
23	696307	H 82 (22)	12		81,6
24	696308	H 82 (22)	16		81,6
25	696161	R 70 (12)		coarse	69,6
26	696017	R 70 (12)	3		69,6
27	696018	R 70 (12)	4,5		69,6
28	696297	R 70 (12)	6		69,6
29	696298	R 70 (12)	8		69,6
30	696299	R 70 (12)	10		69,6
31	696300	R 70 (12)	12		69,6
32	696301	R 70 (12)	16		69,6

**plungers**



Pos.	Part no.	ø (mm)	L (mm)	total length (mm)
1	698229	41	95	200
2	698218	42	125	210
3	698114	43	110	150

Pos.	Part no.	ø (mm)	L (mm)	total length (mm)
4	698080	46	120	240
5	698182	55	175	310

## spacer rings



Pos.	Part no.	type	σ (mm)	H (mm)	version
1	698067	H-82 (22)	81,5	7	Unger
2	698068	H-82 (22)	81,5	18	Unger

Pos.	Part no.	type	σ (mm)	H (mm)	version
3	698047	R-70 (12)	69,5	15	Unger

**GASTROPARTS.COM**



© 2020 Gastroparts Sp. J. All rights reserved.