



GASTROPARTS

Food Preparation ›

[EN] Slicers

[DE] Slicer

[ES] Rebanadora

[FR] Trancheuse

[IT] Affettatrici

[PL] Krajalnice

[RU] Слайсеры

✉ gastroparts@gastroparts.com

☎ tel. +48 56 657 00 66

📘 fb.com/gastroparts.global

GASTROPARTS.COM



slicers adjustment knobs



Pos.	Part no.	symbol	ø (mm)	shaft ø (mm)	shaft length (mm)	handle ø (mm)	suitable for	equiv. no.
1	697509	0-13	55	12	35	42	Sirman	AMC102
2	697767	0-15	50	12	30	43	Omas	I1976
3	697419	0-15	55	12	28	42	RGV	00000000130
4	697510	0-15	60	12	32	58	Sirman	19562402
5	698268	0-15	68	14	94	67	-	-
6	697382	0-15	68	18	46	66	RGV	00000000631
7	697511	0-15	68	18	47	58	Sirman	19562404



Pos.	Part no.	symbol	ø (mm)	shaft ø (mm)	shaft length (mm)	handle ø (mm)	suitable for	equiv. no.
8	697368	0-15	70	18	48	64	Omas	I1990A

spring washers



Pos.	Part no.	ext. ø (mm)	int. ø (mm)	suitable for	equiv. no.
1	698267	19	15	-	-
2	697479	21	14	RGV	00000000856
3	696253	25	12	Sirman	19342005

Pos.	Part no.	ext. ø (mm)	int. ø (mm)	suitable for	equiv. no.
4	697478	26	19	RGV	00000000671
5	696254	32	19	Sirman	19342006

accessories



1

2

Pos.	Part no.	description	suitable for	equiv. no.
1	698272	bush \varnothing 20mm ID \varnothing 14mm L 33mm brass	Celme	74968
2	697512	ring for handle \varnothing 72mm ID \varnothing 35mm thickness 10mm	Sirman	19562410

blade pulleys



Pos.	Part no.	D1 \varnothing (mm)	D2 \varnothing (mm)	D3 \varnothing (mm)	W \varnothing	L (mm)	WL (mm)	mounting \varnothing	suitable for	equiv. no.
1	697467	40	63	80	15	42	194	3 hole	Sirman	SM591519
2	697747	40	64,3	67,5	14	33	152	3 hole	RGV	00000009920
3	696234	40	65	64	15	43	152	3 hole	Sirman	AMG022
4	696233	40	69	65	15	30	147	3 hole	Sirman	AMC022
5	697746	40	76		16	40	157	3 hole	RGV	00000009469
6	696232	57	78	95	20	65	220	4 hole	Sirman	19700307

sharpener units

blade sharpeners



1

2

3

4

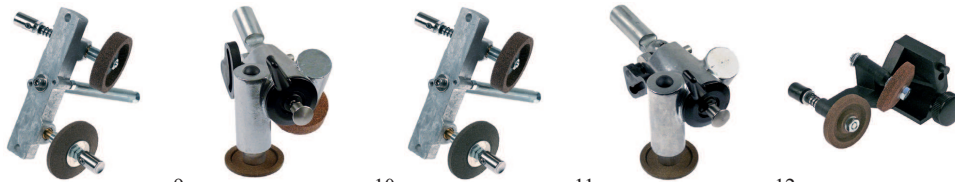
5

6

7

Pos.	Part no.	for device	suitable for	equiv. no.
1	697768	220	Omas	A1064
2	697398	220/250	RGV	00000009875
3	697397	220/250/275	RGV	00000009864
4	697769	220 250	Omas	A1085

Pos.	Part no.	for device	suitable for	equiv. no.
5	697364	250	Omas	A1059
6	697361	250	Omas	A1024
7	697354	275 300 350	RGV	00000009471



8

9

10

11

12

Pos.	Part no.	for device	suitable for	equiv. no.
8	697376	300	RGV	00000001151
9	697362	300	Omas	A1025
10	697355	350	RGV	00000009693

Pos.	Part no.	for device	suitable for	equiv. no.
11	697363	350/370	Omas	A1026
12	697420	PARKER	RGV	00000009168

Food preparation equipment *slicers*

holders



1 2 3 4 5

Pos.	Part no.	L (mm)	B (mm)	H (mm)	Lø (mm)	BA (mm)	material	for device	suitable for	equiv. no.
1	696242	52	30	61	12		aluminium		Sirman	SM501303
2	696241	57	25	54	12		aluminium		Sirman	AME436
3	696265	92	35	28	6	80	plastic	220 250	Sirman	AME456
4	696264	99	48	28	6		plastic	195 220	Sirman	19562101
5	696263	102	46	38	6	88	aluminium	275 300	Sirman	SM501401

knobs



1 2 3 4 5 6 7

Pos.	Part no.	TS	L (mm)	handle ø (mm)	suitable for	equiv. no.
1	697516	M5	8	25	Sirman	19562700
2	697441	M5	30	25	RGV	00000000854
3	697428	M6	15	25	RGV	00000000138
4	697765	M6	22		Omas	I1953

Pos.	Part no.	TS	L (mm)	handle ø (mm)	suitable for	equiv. no.
5	697445	M6	26	33	RGV Sirman	0000000677 SM211413
6	697384	M6	54	25	RGV Sirman	00000000734 AME428
7	697514	M8	60	30	Sirman	SM592400

lids



Pos.	Part no.	L (mm)	B (mm)	BA (mm)	for device	suitable for	equiv. no.
1	696261	104	80	80	220/250/275	Sirman	AME402
2	696262	125	103	88	275 300	Sirman	SM501501

pushbuttons



Pos.	Part no.	ø (mm)	L (mm)	Lø (mm)	for device	suitable for	equiv. no.
1	696260	12	19	5,2	195 220	Sirman	AMA810
2	696259	12	19	6	220 250	Sirman	AME468
3	696255	12	22	6	275 300	Sirman	SM561101

spindles



Pos.	Part no.	D1 ø (mm)	D2 ø (mm)	L (mm)	TS	for device	suitable for	equiv. no.
1	696215	5	6	65	M6	220 250	Sirman	AME412
2	696216	6	10	63	M6	220 250	Sirman	AME424
3	696214	6	10	70	M6	195 220	Sirman	AMA802
4	696217	6	12	78	M6	250 300	Sirman	SM5701201



Pos.	Part no.	ø (mm)	L (mm)	TS	for device	suitable for	equiv. no.
1	696222	12	67	M8		Sirman	AME442
2	696223	12	98	M8	250 300	Sirman	SM540501

accessories



1

2

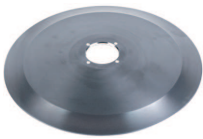
3

4

Pos.	Part no.	description	suitable for	equiv. no.
1	696258	ball blade sharpeners ø 4,8mm metal	Sirman	AME464
2	696256	oval head screws M3 L 3,2mm push button	Sirman	SM150401
3	696271	oval head screws M3 L 4,2mm push button	Sirman	AME427
4	696218	thread bolt blade sharpeners M5 ø 5mm L 30mm	Sirman	AME450

blades

type Inox



Pos.	Part no.	ext. ø (mm)	seat ø (mm)	fixing	int. ø (mm)	H (mm)
1	697561	300	40	4 hole	254	22,5
2	697562	300	57	4 hole	254	22,5
3	697563	330	57	4 hole	254	22,5

Pos.	Part no.	ext. ø (mm)	seat ø (mm)	fixing	int. ø (mm)	H (mm)
4	697373	350	57	4 hole	280	22,5
5	697564	370	57	4 hole	300	22,5

Food preparation equipment *slicers*

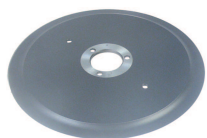
type pullers



Pos.	Part no.	ø (mm)	LA (mm)	TS	suitable for	equiv. no.
1	697531	300	160	M8	Sirman	19702508

Pos.	Part no.	ø (mm)	LA (mm)	TS	suitable for	equiv. no.
2	697532	357	160	M8	Sirman	19702512

type special



Pos.	Part no.	ext. ø (mm)	seat ø (mm)	fixing	version	int. ø (mm)	H (mm)
1	697304	250	40	3 hole	Teflon	210	17,5
2	697547	275	40	3 hole	Teflon	218	21,5
3	697548	275	40	4 hole	Teflon	218	21,5
4	697305	300	40	4 hole	Teflon	254	22,5

Pos.	Part no.	ext. ø (mm)	seat ø (mm)	fixing	version	int. ø (mm)	H (mm)
5	698210	300	57	4 hole	Teflon	254	22,5
6	697550	330	57	4 hole	Teflon	270	23
7	697551	350	57	4 hole	Teflon	280	22,5
8	697552	370	57	4 hole	Teflon	300	22,5

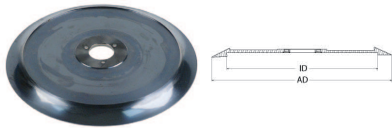
type standard



Pos.	Part no.	ext. ø (mm)	seat ø (mm)	fixing	int. ø (mm)	H (mm)	material
1	697546	195	30	3 hole	155	12,8	C45
2	697545	220	25,4	4 hole	180	15,5	C45
3	697436	220	40	3 hole	180	15,5	C45
4	697544	250	30	3 hole			100Cr6
5	697543	250	40	3 hole	210	13	C45
6	697365	250	40	3 hole	210	17,5	C45
7	697542	275	25,4	4 hole	220	15	C45
8	697541	275	40	3 hole	218	15,5	C45
9	697540	275	40	3 hole	218	21,5	C45
10	697539	275	40	3 hole	220	15,5	C45
11	697538	275	40	4 hole	218	21,5	C45
12	697537	275	54	4 hole	227	17	100Cr6
13	697536	275	57	4 hole	220	22,5	C45
14	697535	296	58	4 hole	240	20	100Cr6
15	697534	300	40	3 hole	245	17	C45
16	697385	300	40	3 hole	250	19	C45

Pos.	Part no.	ext. ø (mm)	seat ø (mm)	fixing	int. ø (mm)	H (mm)	material
17	698214	300	40	3 hole	254	22,5	C45
18	697451	300	40	4 hole	254	22,5	C45
19	697533	300	50	4 hole			100Cr6
20	698191	300	57	4 hole	254	22,5	C45
21	697468	301	55	4 hole	254	22,5	100Cr6
22	697518	330	40	3 hole	270	21	100Cr6
23	697466	330	40	4 hole	270	21	100Cr6
24	697375	330	57	4 hole	270	23	100Cr6
25	697465	350	47	4 hole	280	23	100Cr6
26	697463	350	57	4 hole	280	22,5	100Cr6
27	697399	350	57	4 hole	280	22,5	C45
28	697462	350	57	4 hole	306	22,5	100Cr6
29	697461	350	58	4 hole	282	24	100Cr6
30	697460	370	57	4 hole	300	22,5	100Cr6
31	697459	380	57	4 hole	310	22,5	100Cr6
32	697458	385	57	4 hole	315	22,5	100Cr6

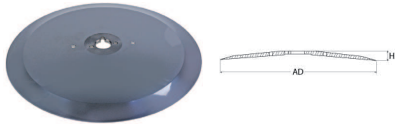
type TN



Pos.	Part no.	ext. ø (mm)	seat ø (mm)	fixing	int. ø 1 (mm)	int. ø 2 (mm)	H (mm)	material
1	697557	250	40	3 hole	200,5	190	10	C45
2	697452	300	40	3 hole			14,5	
3	697558	300	40	3 hole	250	240	14,7	100Cr6

Pos.	Part no.	ext. ø (mm)	seat ø (mm)	fixing	int. ø 1 (mm)	int. ø 2 (mm)	H (mm)	material
4	697559	330	57	4 hole	274	265	15,5	100Cr6
5	697560	350	57	4 hole	286	284	15,5	100Cr6

type VOLANO



Pos.	Part no.	ext. ø (mm)	seat ø (mm)	fixing	H (mm)	material
1	697553	300	25,4	2 holes	18,5	100Cr6
2	697374	330	25,4	2 holes	19	100Cr6
3	697554	350	25,4		20,4	100Cr6

Pos.	Part no.	ext. ø (mm)	seat ø (mm)	fixing	H (mm)	material
4	697555	370	25,4	1 hole	22	100Cr6
5	697556	370	25,4	2 holes	22	100Cr6

carriage plates



Pos.	Part no.	L (mm)	B (mm)	BA (mm)	for device	suitable for	equiv. no.
1	697527	20	22	33	220	Sirman	AME264A
2	697528	24	23	33	250	Sirman	AMG264A
3	697529	250	275	33	275 300	Sirman	195104012

handles



Pos.	Part no.	TS	handle ø (mm)	L (mm)	H (mm)	BA (mm)	for device	suitable for	equiv. no.
1	697440	M10	66	51				RGV	00000000432
2	697380	M10	66	29			300 330 350	RGV	00000000432+00000000431
3	697442	M12	28	30				RGV	00000000676
4	697381	M12	66	50				RGV	00000000629
5	697443	M8	50	29				RGV Sirman	00000000378 19562504
6	691263	M8		160	56	133		Sirman	IB4200910
7	697427	M8	28	22				RGV	00000000881

Food preparation equipment *slicers*



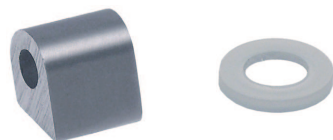
Pos.	Part no.	TS	handle ø (mm)	L (mm)	H (mm)	BA (mm)	for device	suitable for	equiv. no.
8	697426	M8	43	22				RGV	0000000833
9	697425	M8	50				220/250/275	RGV	0000000378+0000000371
10	697515	M8	50	14			275 300	Sirman	SM19014009

holders



Pos.	Part no.	L (mm)	B (mm)	BA (mm)	for device	suitable for	equiv. no.
1	696237	190	100	48	275 300	Sirman	SM500818
2	696235	195	85	33	220	Sirman	AMC258
3	696236	200	85	33	250	Sirman	AMG258

accessories



Pos.	Part no.	description	suitable for	equiv. no.
1	696250	holder M5 L 25mm ID ø 10mm thickness 20mm 220 250	Sirman	AMA289
2	696280	spacer ring ø 22mm ID ø 12mm thickness 3mm Teflon	Sirman	SM211108

covers



Pos.	Part no.	for knife ø (mm)	ø (mm)	mounting thread	BM (mm)	mounting ø	aperture (mm)	suitable for	equiv. no.
1	697472	220	180	M6	12x12			RGV	0000000489
2	697447	250	209				9x9	RGV	0000000195
3	697745	250	209	M6	12x12			RGV	0000000490
4	697749	250	209	M6	12x12			RGV	0000000490
5	697744	300	248	M6	12x12			RGV	0000000403
6	693786	300	255	M10		17		Sirman	SM500503



Pos.	Part no.	for knife ø (mm)	ø (mm)	mounting thread	BM (mm)	mounting ø	suitable for	equiv. no.
1	697522	220	230	M6		12	Sirman	AMC006
2	697457	250					Sirman	AMG006
3	697313	350	365	M8	12x12		Sirman	SM500504
4	697500	350	380	M8	15			

bushes



Pos.	Part no.	external thread	internal thread	L (mm)	suitable for	equiv. no.
1	698246	M10x1	M6	18	Sirman	SM133418
2	698242	M10x1,25	M6	18	Sirman	SM133417
3	697454	M12	M8	25	ABM O.M.S.	

handles



1

2

Pos.	Part no.	TS	ø (mm)	L (mm)	suitable for	equiv. no.
1	696266	M4	9	14	Sirman	AMA008

Pos.	Part no.	TS	ø (mm)	L (mm)	suitable for	equiv. no.
2	696267	M4	16	18,5	Sirman	19021110

miscellaneous



1

Pos.	Part no.	description	suitable for	equiv. no.
1	697523	protection for knife ø 350mm ø 360mm aluminium	Sirman	SM503404

Food preparation equipment *slicers*

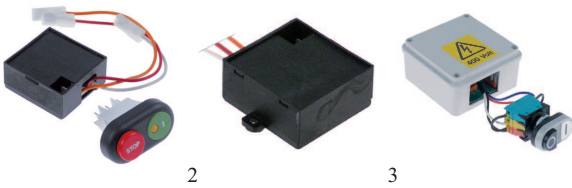
setting disc for slice thickness



Pos.	Part no.	Lø (mm)	groove (mm)	ext. ø (mm)	thickness (mm)	suitable for	equiv. no.
1	697470	12	6	52	21,5	RGV	0000000830
2	697756	12	6	56	10	Sirman	19563505LG
3	697506	12	6	56	20	Sirman	AMI092
4	697471	12	6	58	21	RGV	0000000379
5	697507	12	6,5	56	21	Sirman	SM190100011
6	697508	18	8	85	24,5	Sirman	SM190100022

electrical parts

control boxes



Pos.	Part no.	voltage (V)	suitable for	equiv. no.
1	401855	230	RGV	00000009240
2	400788	230	RGV	0000000297

Pos.	Part no.	voltage (V)	suitable for	equiv. no.
3	401701	400	RGV	0000000655

keypads

gaskets



Pos.	Part no.	L (mm)	B (mm)	suitable for	equiv. no.
1	403004	122	52	Sirman	19563030
2	401373	135	50	Sirman	19563034

Pos.	Part no.	L (mm)	B (mm)	suitable for	equiv. no.
3	401380	150	60	Sirman	19563032

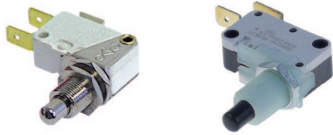
keypads



Pos.	Part no.	L (mm)	B (mm)	suitable for	equiv. no.
1	401513	75	40	Omas	11680
2	401512	75	40	Omas	11675
3	403002	120	48	Emmepi Sirman	808612 19702000
4	403005	130	41	Sirman	19702036

Pos.	Part no.	L (mm)	B (mm)	suitable for	equiv. no.
5	403006	130	41	Sirman	19702034
6	401694	130	41	Sirman	19702004
7	403003	150	55	Sirman	19702002

micro-switches



1

2

Pos.	Part no.	TS	number of poles (poles)	function	switching capacity (A)	connection
1	345032	M10x0,75	1	1CO	16	flat plug 6,3mm
2	345678	M10x0,75	1	1NO	12	flat plug 6,3mm

PCBs



1

2

3

4

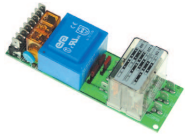
5

6

7

Pos.	Part no.	voltage (V)	suitable for	equiv. no.
1	401511	230	Omas	S3290
2	401510	230	Omas	S3288
3	400954	230	Sirman	19411007
4	400785	230	RGV	00000000359

Pos.	Part no.	voltage (V)	suitable for	equiv. no.
5	400797	230	Omas	S3226
6	400955	230/400	Emmepi Sirman	808629 19411008
7	401514	24	Omas	S3291



8

Pos.	Part no.	voltage (V)	suitable for	equiv. no.
8	403007	400	Sirman	19411000

switches and momentary switches

momentary push switches



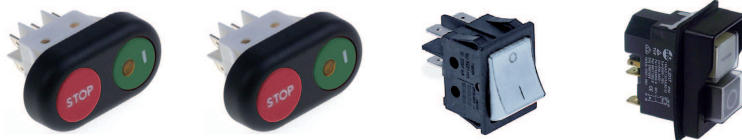
1

2

Pos.	Part no.	mounting \varnothing (mm)	number of poles (poles)	function	voltage (V)	suitable for	equiv. no.
1	346415	19,2	1	1NO	50	Sirman	LF1041000
2	346414	19,2	2	1NC/1NO	250	Sirman	LF1041001

Food preparation equipment *slicers*

push switches



1

2

3

4

Pos.	Part no.	mounting measures (mm)	number of poles (poles)	function	voltage (V)	switching capacity (A)	suitable for	equiv. no.
1	345712	30x22	2	2CO	250	16	RGV	0000000296
2	345510	30x22	2	2NO	250	16	RGV	0000000306
3	301009	30x22	2	2NO	250	16	Astoria CMA Electrolux INCO S.L. Zanussi	18262 18262 050491 301009 0A8239
4	347067	45x22	2	2NO	250	16	Sirman	19410152

rotary switches



1

Pos.	Part no.	number of poles (poles)	switching capacity (A)	suitable for	equiv. no.
1	346592	2	20	Sirman	19410160

accessories



1

2

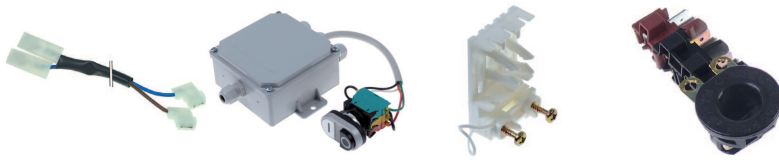
3

4

5

Pos.	Part no.	description	suitable for	equiv. no.
1	346252	frame external size mm internal size 30x22mm	Sirman	19563171
2	301036	protecting cover for cradle switch 30x22mm	Animo Astoria CMA Electrolux FriFri INCO S.L. Infrico Rancilio RM Gastro ...	02294 19049 19049 002150 400647 301036 405X13 34030131 401509000 ...
3	301127	protecting cover internal size 30x55mm	RGV	0000000285
4	301058	protecting cover internal size 30x55mm	RGV	0000000653
5	346181	push button oval external size 30x55mm mounting ø 21mm	Gam GAM RGV	RIMPS1051 RIMPS1051 0000000651

miscellaneous



1

2

3

4

Pos.	Part no.	description	suitable for	equiv. no.
1	550928	connection cable L 300mm 2 poles	Sirman	19410718
2	601657	conversion kit 230/400V		
3	550766	holder for terminal block	Sirman	19410820
4	550764	terminal block with strain relief 4 poles 380V 16A	Sirman	19410802

feet



1

2

3

4

5

6

7

Pos.	Part no.	TS	H (mm)	ø (mm)	th.le (mm)	bore ø (mm)	suitable for	equiv. no.
1	697433		24	35		5	RGV	0000000140
2	697764		30	35		6	Omas	P5011
3	697369		35	47		9	Omas	P5008
4	693791	M5	25	36	10		Sirman	19560201
5	697387	M5	27	36	10		Fimar	SL2674
6	697757	M6	27	37	9			
7	697773	M6	35	47	12			



8

9

10

11

12

Pos.	Part no.	TS	H (mm)	ø (mm)	th.le (mm)	bore ø (mm)	suitable for	equiv. no.
8	697770	M8	34	47	12			
9	697748	M8	34	40			RGV	0000001251
10	802136	M8	40	47	15		Angelo Po Sirman	36D5690 19560202
11	527255	M8	45	47	12		Wega	WY15314001
12	697383	M8	46	47	10		RGV	0000000628

food holders



Pos.	Part no.	for device	L (mm)	Lø (mm)	suitable for	equiv. no.
1	697530	275 300	270	12	Sirman	SM11016007
2	698190	300			Sirman	19324102
3	697444	300 350	290	12	RGV	00000009686

Food preparation equipment *slicers*

handles



1 2 3 4 5

Pos.	Part no.	TS	ø (mm)	L (mm)	th.le (mm)	suitable for	equiv. no.
1	698195	M10	32	87		Sirman	19562903
2	111123	M10 FT	30	110		Emmepi RGV Sirman	808764 00000000452 19562904
3	697429	M6	25	126		RGV	00000000298
4	697432	M6	26	70	6	RGV Sirman	00000000825 19562900
5	697431	M6	26	70	10	RGV Sirman	00000000327 19562901

lever handles



1

Pos.	Part no.	L (mm)	Lø (mm)	material	suitable for	equiv. no.
1	697456	130	9	aluminium		

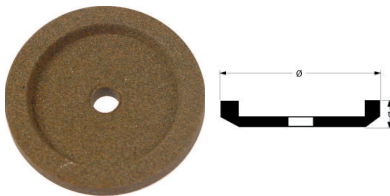
accessories



1 2 3 4

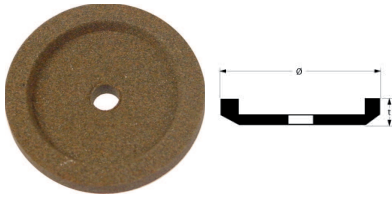
Pos.	Part no.	description	suitable for	equiv. no.
1	696220	spindle food holder ø 10mm L 210mm	Sirman	AMC270A
2	696221	spindle food holder ø 12mm L 265mm 300	Sirman	AMP270
3	697480	stop bolt food holder ø 7,5mm L 8mm plastic	RGV	00000000151
4	698193	thread bolt for handle ø 14mm L 120mm M10	Sirman	19541509

grindstones



Pos.	Part no.	ø (mm)	thickness (mm)	bore ø (mm)	grained
1	697549	40	7,8	6	fine
2	697566	40	8	10	fine
3	697567	40	8,2	12	fine
4	697565	40	10	6	fine
5	697492	40	11	6	coarse
6	697568	42	8,5	8	coarse
7	697569	43	8	6	coarse
8	697505	43	8	6	fine
9	697571	43	8	12	fine
10	697570	43	10	8	fine

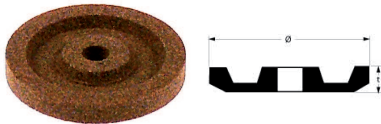
Pos.	Part no.	ø (mm)	thickness (mm)	bore ø (mm)	grained
11	697572	43	10	12	coarse
12	697573	45	7	8	fine
13	698197	45	8	6	fine
14	698274	45	8	8	fine
15	698198	45	9	6	coarse
16	698263	45	10	6	fine
17	697575	45	10	8	coarse
18	697574	45	10	8	fine
19	698244	45	10	8	fine
20	698273	45,3	8	6	fine



Pos.	Part no.	ø (mm)	thickness (mm)	bore ø (mm)	grained
21	697576	48	8	6	fine
22	697577	48	8	14,3	fine
23	697589	48	10	13	coarse
24	697393	48	15	8	coarse
25	697579	50	8	7	coarse
26	697580	50	8	8	coarse
27	697392	50	8	8	fine
28	697578	50	9	6	coarse
29	698264	50	9	6	fine
30	697581	50	10	10	fine

Pos.	Part no.	ø (mm)	thickness (mm)	bore ø (mm)	grained
31	697583	50	10	12	coarse
32	697582	50	10	12	fine
33	697453	50	12	10	
34	697378	51	7	8	fine
35	697584	51	7	14,3	fine
36	697585	52	8	10	coarse
37	697586	55	9	12	fine
38	697587	59	7,5	14,3	fine
39	697588	63	10	14,3	fine

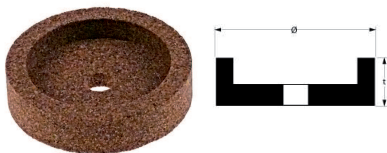
grindstones with hub



Pos.	Part no.	ø (mm)	thickness (mm)	bore ø (mm)	grained
1	697424	40	8	6	coarse
2	697423	40	8	6	fine
3	697761	40	8	6	fine
4	697760	40	8	6	powder coarse grained
5	697590	42	9	8	fine
6	697422	45	6	8	fine
7	697421	45	8	6	coarse
8	697762	45	8	6	powder coarse grained

Pos.	Part no.	ø (mm)	thickness (mm)	bore ø (mm)	grained
9	697591	47	7	8	fine
10	697357	50	8	6	coarse
11	697358	50	8	6	fine
12	697593	50	8	8	coarse
13	697592	50	8	8	fine
14	697434	50	10	10	fine
15	697594	54	8	8	fine
16	697595	60	8	6	fine

grindstones cup-shaped



Pos.	Part no.	ø (mm)	thickness (mm)	bore ø (mm)	grained
1	697596	40	10	7	fine
2	697597	40	10	12	coarse
3	697598	40	10	13	fine
4	697599	43	10	8	coarse
5	697751	45	8	6	fine
6	697600	45	10	6	coarse
7	691840	45	10	6	coarse
8	697602	45	11	8	coarse
9	697601	45	15	6	coarse
10	697604	48	15	14,3	coarse
11	697603	48	15	14,3	fine

Pos.	Part no.	ø (mm)	thickness (mm)	bore ø (mm)	grained
12	697752	50	10	10,2	fine
13	697605	50	12	10	coarse
14	697435	50	12	12	fine
15	697759	51	7	14,3	fine
16	697606	51	12	8	coarse
17	697377	51	12	8	coarse
18	697607	51	15	14,3	coarse
19	697608	55	15	6	coarse
20	697609	55	15	12	coarse
21	697610	55	15	14,3	coarse
22	697611	64	19	14,3	coarse

Food preparation equipment *slicers*

guiding parts for carriage



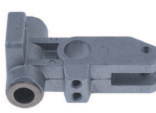
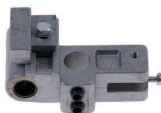
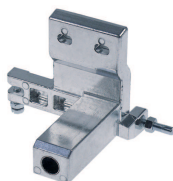
Pos.	Part no.	L (mm)	B (mm)	H (mm)	Lø (mm)	TS	for device	suitable for	equiv. no.
1	696244	120	122	66	18	M22	220 250	Sirman	SM500618
2	696243	122	116	59	20	M8	220 250	Sirman	AMM212



1 2 3 4 5 6 7

Pos.	Part no.	description	suitable for	equiv. no.
1	696279	connection plate L 37mm W 33mm HD 18mm	Sirman	SM190830
2	696270	grub screw M8 L 27mm plastic slicer	Sirman	AMA220
3	696289	knurled nut M22 ø 32mm H 7mm for carriage 220 250	Sirman	19534029
4	696341	screw for carriage M8 L 16mm ø 32mm	Sirman	SM561504
5	696231	spindle M8 L 32mm ø 10,5mm 220 250	Sirman	19534034
6	696288	threaded bush M22 L 20mm ID ø 11mm 220 250	Sirman	19534024
7	696278	threaded plate M6 L 36mm W 15mm for carriage	Sirman	19533200

for sliding plates



1 2 3 4 5

Pos.	Part no.	L (mm)	Lø (mm)	for device	suitable for	equiv. no.
1	697483			195	RGV	0000000117
2	697448			220 250	RGV	00000009177
3	696247	80	15	220 250	Sirman	AMM064
4	696245	87	15	275 300	Sirman	SM500218
5	696246	112	19	300 330	Sirman	19500107



1 2

Pos.	Part no.	description	suitable for	equiv. no.
1	697477	connection plate L 75mm W 15mm	RGV	0000000126
2	696276	connection plate L 83mm W 12mm thickness 4mm	Sirman	AMA066

bushes



Pos.	Part no.	ext. ø (mm)	int. ø (mm)	H (mm)	suitable for	equiv. no.
1	696283	20	18	20	Sirman	19324108

Pos.	Part no.	ext. ø (mm)	int. ø (mm)	H (mm)	suitable for	equiv. no.
2	696282	22	19	20	Sirman	19324005

spindles

accessories



1

Pos.	Part no.	TS	ø (mm)	L (mm)	material
1	696269	M6	21	16	stainless steel

2

Pos.	Part no.	TS	ø (mm)	L (mm)	material
2	696268	M8	22	10	stainless steel



Pos.	Part no.	application	ø (mm)	L (mm)	TS	for device	suitable for	equiv. no.
1	696229	for carriage	18	445	M8	250 275	Sirman	19530612
2	696227	for carriage	20	385	M8	220	Sirman	AMC242
3	696228	for carriage	20	420	M8	250	Sirman	AMG242
4	696225	sliding plate	12	120			Sirman	AMI080
5	696224	sliding plate	12	130		275 300	Sirman	SM521218
6	697449	sliding plate	12	160		Lady	RGV	0000000944
7	696226	sliding plate	19	120	M8	250 370	Sirman	19530705

hand guard



1

Pos.	Part no.	application	L (mm)	B (mm)	BA (mm)	for device	suitable for	equiv. no.
1	696287	blade sharpeners	210	105	54	195	Sirman	19562382

Food preparation equipment *slicers*



Pos.	Part no.	for knife ø (mm)	H (mm)	B (mm)	BA (mm)	material	suitable for	equiv. no.
1	696284	220	80	35	47	plastic	Sirman	19562201
2	697298	250					Sirman	19562202
3	697754	300	125	60	84	stainless steel	RGV	00000000784
4	696285	300	180	95	85	aluminium	Sirman	SM501203
5	696286	350	200	118	85	aluminium	Sirman	19521311



Pos.	Part no.	application	for device	H (mm)	B (mm)	BA (mm)	suitable for	equiv. no.
1	697474	food holder	220	165	250	78	RGV	00000000326/3
2	697473	food holder	250	165	250	90	RGV	00000000326/1
3	697446	food holder	300	300	163	110	RGV	00000000407



Pos.	Part no.	application	for device	H (mm)	B (mm)	BA (mm)	suitable for	equiv. no.
1	698245						Sirman	1956232206
2	698196	for carriage	275 300	220	150	88	Sirman	19562324
3	697755	for carriage	300	180	152	110	RGV	00000000162

accessories



Pos.	Part no.	TS	ø (mm)	L (mm)
1	697482	M5	8	15
2	696281	M5	16	31

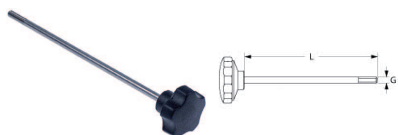
Pos.	Part no.	TS	ø (mm)	L (mm)
3	697481	M6	14	

housings



Pos.	Part no.	L (mm)	B (mm)	for device	suitable for	equiv. no.
1	699017	400	260	220	RGV	00000000500 (220)
2	699030	400	260	250	RGV	00000000500 (250)

locking screws



Pos.	Part no.	TS	L (mm)	suitable for	equiv. no.
1	697707	M10	235		
2	697733	M6			
3	697438	M6	145	RGV	0000000817
4	697703	M6	147		
5	697717	M6	150		
6	697439	M6	155	RGV	00000000777
7	697712	M6	170		
8	697379	M6	190	RGV	00000001024
9	697718	M6	190		
10	697731	M6	200		
11	697704	M6	215		

Pos.	Part no.	TS	L (mm)	suitable for	equiv. no.
12	697705	M6	220		
13	697701	M7	183		
14	697702	M7	257		
15	697700	M8	140		
16	697728	M8	164		
17	697719	M8	185		
18	697371	M8	200	Omas	T5002
19	697732	M8	205		
20	697706	M8	230		
21	697727	M8	270		



Pos.	Part no.	TS	L (mm)	ø (mm)	L1 (mm)	suitable for	equiv. no.
1	697710	M6	125	10	61		
2	697722	M6	145	10	60		
3	697513	M6	148	10	51	Sirman	AMC032
4	697715	M6	148	10	52		
5	697711	M6	155	10	100		
6	697723	M6	165	10	60		
7	698265	M6	170	8	70	Fama	
8	697709	M6	170	8	80	Sirman	AVA032
9	697713	M6	170	10	60		
10	697708	M6	177	12	67		

Pos.	Part no.	TS	L (mm)	ø (mm)	L1 (mm)	suitable for	equiv. no.
11	697437	M6	200	10	50	RGV	00000000572
12	697714	M6	200	10	76		
13	697739	M6	200	10	80	Sirman	SM212740
14	698078	M6	200	10	80	Sirman	SM212740
15	697724	M7	167	10	58		
16	697720	M7	185	20	65		
17	697725	M7	225	10	60		
18	697726	M7	277	10	120		
19	697729	M8	222	18	35		
20	397500	M8	223	12	100		



Pos.	Part no.	TS	L (mm)	ø (mm)	L1 (mm)	L2 (mm)	suitable for	equiv. no.
1	697716	M8	160	12	82	22		
2	697734	M8	198	10		24	Sirman	AVG032

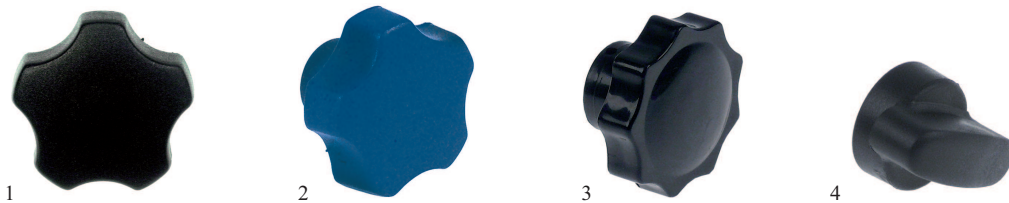
Pos.	Part no.	TS	L (mm)	ø (mm)	L1 (mm)	L2 (mm)	suitable for	equiv. no.
3	697721	M8	240	15	70	12		
4	691124	M8	250	10	94	23	Angelo Po	36H0690

Food preparation equipment *slicers*



Pos.	Part no.	TS	L (mm)	ø (mm)	L1 (mm)	D1 ø (mm)	L2 (mm)	L3 (mm)	suitable for	equiv. no.
1	697735	M6	160	10		10	18	18	Sirman	19530501
2	698199	M6	185						Sirman	19530532
3	697740	M6	185	10		10	18	18	Sirman	19530532
4	697730	M8	190	12	70	12	23	23		
5	697738	M8	200	10		10	23	23	Sirman	SM592021
6	697736	M8	230	12		12	25	25	Sirman	19530554
7	696230	M8	235	10	45	10	25	124	Sirman	19530507
8	697737	M8	240	12		12	23	23	Sirman	19530509

handles



Pos.	Part no.	TS	handle ø (mm)	suitable for	equiv. no.
1	698200	M6		Sirman	19562502
2	111054	M6		Sirman	19564016

Pos.	Part no.	TS	handle ø (mm)	suitable for	equiv. no.
3	697443	M8		RGV Sirman	0000000378 19562504
4	697766	M8		Omas	I1926

motors



Pos.	Part no.	voltage (V)	ph	speed (rpm)	spindle ø (mm)	WL (mm)	ø (mm)	H (mm)	BA (mm)	LA (mm)	Lø (mm)	suitable for	equiv. no.
1	500923	230	1	1380	15	28	115	87	49	145	6	RGV	0000000508
2	500912	230	1	1380	15	28	115	92	49	145	6	RGV	0000000510
3	500973	230	1	1380	15	28	115	112	75	145	6	RGV	0000000425
4	500954	230	1	1380	15	28	115	112	75	145	8	RGV	0000001150
5	500956	230	1	1380	17	27	154	130	98	170	10	RGV	0000000577
6	500898	230	1	1400	15	20	125	100	71	155	6	Sirman	19400101
7	500717	230	1	1400	15	21	135	120	63	155	8	Sirman	SM400108
8	500718	400	3	1400	15	22	135	120	63	155	8	Sirman	SM402215



Pos.	Part no.	voltage (V)	ph	speed (rpm)	spindle ø (mm)	WL (mm)	ø (mm)	H (mm)	BA (mm)	Lø (mm)	for device	suitable for	equiv. no.
1	500992	230	1	1400	15	22	93	103	65	6		FAC	
2	500721	230	1	890	16,5	32	130	140	108	8	GEMMA 350	Sirman	19400108
3	500715	230	1	1400	15	23	110	98	69	6	220	Sirman	AMC648
4	500901	230	1	1400	16,5	32	130	140	108	8	300 330 350	Sirman	19400107
5	500720	230/400	3	890	16,5	32	130	120	87	8	GEMMA 350	Sirman	19400408

poly-V belts



Pos.	Part no.	profile	L (mm)	B (mm)	grooves	suitable for	equiv. no.
1	697612	TB2	266	16	8		
2	697613	TB2	295	16	8	Omas	C4809
3	697280	TB2	310	16	8	Sirman	AMG024
4	697615	TB2	310	20	10		
5	698217	TB2	330	14	7	RGV	00000000861
6	697616	TB2	345	16	8		
7	698219	TB2	360	16	8	Sirman	19310206
8	697617	TB2	360	20	10		
9	698220	TB2	380	20	10	Sirman	19310207
10	698215	TB2	400	20	10	RGV	00000000635
11	697618	TB2	400	24	12		
12	697619	TB2	430	16	8		
13	698216	TB2	480	20	10	RGV	00000001026
14	698221	TB2	480	22	11	Sirman	19310209
15	697620	TB2	510	20	10		
16	697621	TB2	526	20	10		
17	698000	TB2	630	24	12		
18	697622	TB2	675	16	8		
19	697624	TB2	770	20	10		
20	697626	TB2.34	381	21	8		
21	697627	TB2.34	406	26	9		
22	697628	TB2.34	406	40	17		
23	697629	TB2.34	457	24	9		
24	697630	TB2.34	483	24	10		
25	697632	TB2.34	508	24	10		
26	697633	TB2.34	559	23	9		
27	697636	TB2.34	610	19	7		
28	697637	TB2.34	660	19	7		
29	697638	TB2.34	711	19	7		

sliding plates



Pos.	Part no.	for device	BA (mm)	mounting thread	suitable for	equiv. no.
1	697524	220	70	M6	Sirman	AMC040
2	697525	250	70	M8	Sirman	AMG040
3	697526	300	87		Sirman	SM504120

Food preparation equipment *slicers*

holders



1

2

3

Pos.	Part no.	Lø (mm)	BA (mm)	shaft ø (mm)	shaft length (mm)	for device	suitable for	equiv. no.
1	696240	7,3	70	15	38	220 250	Sirman	AMM058
2	696238	8	98	15	46	300	Sirman	SM500318
3	696239	19	120			300 330	Sirman	195107E07

hand guard



Pos.	Part no.	ø (mm)	int. ø (mm)	thickness (mm)	suitable for	equiv. no.
1	696252	68	18	10	Sirman	19563002

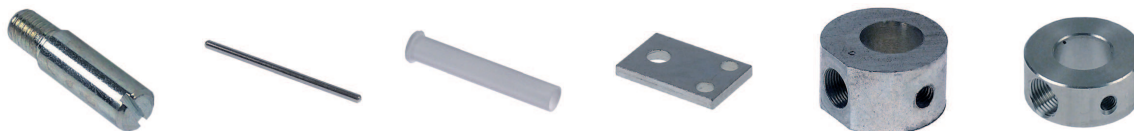
Pos.	Part no.	ø (mm)	int. ø (mm)	thickness (mm)	suitable for	equiv. no.
2	696251	68	25,8	10	Sirman	AMA062

springs



Pos.	Part no.	ø (mm)	L (mm)	wire gauge ø (mm)	version	D1 ø (mm)	D2 ø (mm)	for device	suitable for	equiv. no.
1	696207		19	1,5	conical	23	25	220 250	Sirman	AMC244
2	696205		22	2	conical	22	28	250 300	Sirman	SM370104
3	696206		53	1,5	conical	23	25	220 250	Sirman	AMC254
4	696212	7,6	22	0,7				195 220	Sirman	AMA814
5	696213	7,6	28	0,7				PARKER	Sirman	AME410
6	696211	11,5	46	1,3				220	Sirman	AMC672
7	696208	13,5	57	1,4				275 300	Sirman	SM370111
8	696209	13,5	92	1,4					Sirman	19390205
9	696210	14	16	1,2				220 250	Sirman	19390600
10	698266	22	24	2,6						

miscellaneous



1

2

3

4

5

6

Pos.	Part no.	description	suitable for	equiv. no.
1	697370	bolt M8 ø 10mm L 25mm for adjustable foot	Omas	S7595
2	697455	bolt ø 5mm L 98,5mm for motor		
3	697476	bush ø 14mm L 88mm ID ø 12mm	RGV	0000000509
4	696277	connection plate L 37mm W 25mm for motor	Sirman	AMC680
5	696248	holder M10x0,75 ø 30mm for micro switch	Sirman	AMA028
6	697356	holder M10x0,75 ø 30mm for micro switch	RGV	0000000300



7

8

Pos.	Part no.	description	suitable for	equiv. no.
7	696249	holder M10x0,75 ø 35mm for micro-switch	Sirman	19540905
8	696219	thread bolt M6 ø 11mm L 74mm for motor HD 5mm	Sirman	AMC670

GASTROPARTS.COM



© 2020 Gastroparts Sp. J. All rights reserved.