



**GASTROPARTS**

# Graef

- [EN]** Equipment
- [DE]** Geräte
- [ES]** Aparatos
- [FR]** Équipement
- [IT]** Attrezzature
- [PL]** Urządzenia
- [RU]** Оборудование

✉ [gastroparts@gastroparts.com](mailto:gastroparts@gastroparts.com)

☎ +48 56 657 00 66

📘 [fb.com/gastroparts.global](https://fb.com/gastroparts.global)

**GASTROPARTS.COM**





## switches and momentary switches

### rocker/momentary rocker switches

30x22mm



1

<b>Part No.</b>	348113	<b>Ref. No.</b>	19032
<b>description</b>	momentary rocker switch mounting measurements 30x22mm red/green 1NO/1NC 250V 16A momentary/momentary connection male faston 6.3mm ambient temperature max. 125°C protection IP65 with cover cap		

### push/momentary push switches

ø22mm



1

<b>Part No.</b>	348196	<b>Ref. No.</b>	143822
<b>description</b>	momentary push switch mounting measurements ø22mm 1NO/1NC/indicator light connection male faston 2.8mm		



1

<b>Part No.</b>	348138	<b>Ref. No.</b>	50151
<b>description</b>	momentary push switch mounting ø 22mm black/white 1NO/1NC/indicator light 230V 10A 0-1 connection screw		

## control equipment

### SIEMENS

3SB series ø22mm new

push buttons



1

<b>Part No.</b>	348021	<b>Ref. No.</b>	143765 901 901+902
<b>description</b>	double momentary switch mounting measurements ø22mm 1NO/1NC/indicator light connection male faston 2.8mm 6A type 3SA8 810-OEB11 rated 380V		

## relays

### power relays

with bracket mounting



1

<b>Part No.</b>	380312	<b>Ref. No.</b>	81026 908 913
<b>description</b>	power relays FINDER 230VAC 10A 3CO connection male faston 4.8mm bracket mounting dimensions 52x32.2x36.5mm manuf. no. 60.63.8.230.0000		

## electronics

### PCBs



1

<b>Part No.</b>	403638	<b>Ref. No.</b>	50113
<b>description</b>	PCB slicer SO22023/SO27523		



1

<b>Part No.</b>	403660	<b>Ref. No.</b>	19062
<b>description</b>	PCB slicer suitable for GRAEF		



1

<b>Part No.</b>	403605	<b>Ref. No.</b>	143754
<b>description</b>	PCB slicer suitable for GRAEF repair set		



## equipment-specific units

## for slicers

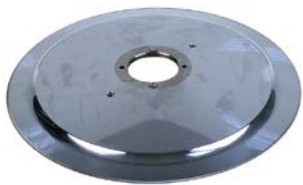
## blades

## standard



1

<b>Part No.</b>	698191	<b>Ref. No.</b>	3000434 3060434 401
<b>description</b>	slicing machine blade ED ø 300mm seat ø 57mm 4 hole ID ø 254mm H 22.5mm C45 standard		



1

<b>Part No.</b>	697375	<b>Ref. No.</b>	3300434
<b>description</b>	slicing machine blade ED ø 330mm seat ø 57mm 4 hole ID ø 270mm H 23mm 100Cr6 standard		

## sharpener units

## sharpener units



1

<b>Part No.</b>	698777	<b>Ref. No.</b>	50115
<b>description</b>	blade sharpener detachable Solido 220 suitable for GRAEF		



1

<b>Part No.</b>	698778	<b>Ref. No.</b>	50134
<b>description</b>	blade sharpener detachable Solido 275 suitable for GRAEF		

## grindstones



1

<b>Part No.</b>	697575	<b>Ref. No.</b>	50116
<b>description</b>	grindstone ø 45mm thickness 10mm bore ø 8mm grained coarse with bevel, without hub		



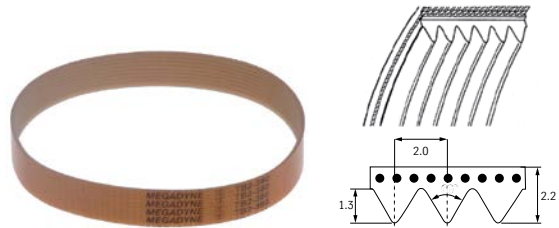
1

<b>Part No.</b>	697574	<b>Ref. No.</b>	50117
<b>description</b>	grindstone ø 45mm thickness 10mm bore ø 8mm grained fine with bevel, without hub		

## transmission technology and ball bearings

## drive belts

## poly-v belts



1

<b>Part No.</b>	697367	<b>Ref. No.</b>	50114
<b>description</b>	poly-v belt grooves 8 W 16mm L 330mm profile TB2		

**GASTRO**PARTS.COM

